

17 對買方的警告

WARNING TO PURCHASERS

1. 此提示建議你聘用一間獨立的律師事務所(代表擁有人行事者除外)，以在交易中代表你行事。
2. 如你聘用上述的獨立的律師事務所，以在交易中代表你行事，該律師事務所將會能夠向你提供獨立意見。
3. 如你聘用代表擁有人行事的律師事務所同時代表你行事，而擁有人與你之間出現利益衝突 –
 - (i) 該律師事務所可能不能夠保障你的利益；及
 - (ii) 你可能要聘用一間獨立的律師事務所。
4. 如屬3.(ii)段的情況，你須支付的律師費用總數，可能高於如你自一開始即聘用一間獨立的律師事務所須支付的費用。

1. You are recommended to instruct a separate firm of solicitors (other than that acting for the owner) to act for you in relation to the transaction.
2. If you instruct such separate firm of solicitors to act for you in relation to the transaction, that firm will be able to give independent advice to you.
3. If you instruct the firm of solicitors acting for the owner to act for you as well, and a conflict of interest arises between the owner and you –
 - (i) that firm may not be able to protect your interests; and
 - (ii) you may have to instruct a separate firm of solicitors.
4. In the case of paragraph 3.(ii), the total solicitors' fees payable by you may be higher than the fees that would have been payable if you had instructed a separate firm of solicitors in the first place.

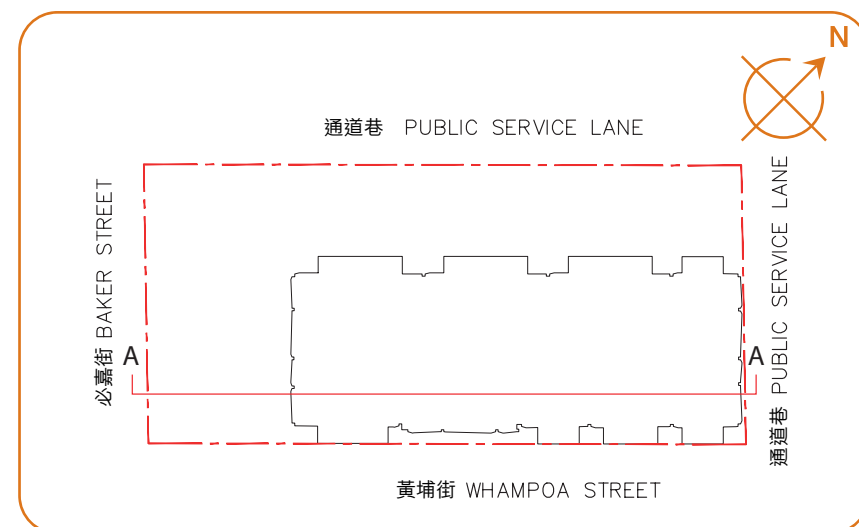
18 期數中的建築物的橫截面圖

CROSS-SECTION PLAN OF BUILDING IN THE PHASE

橫截面圖 A-A

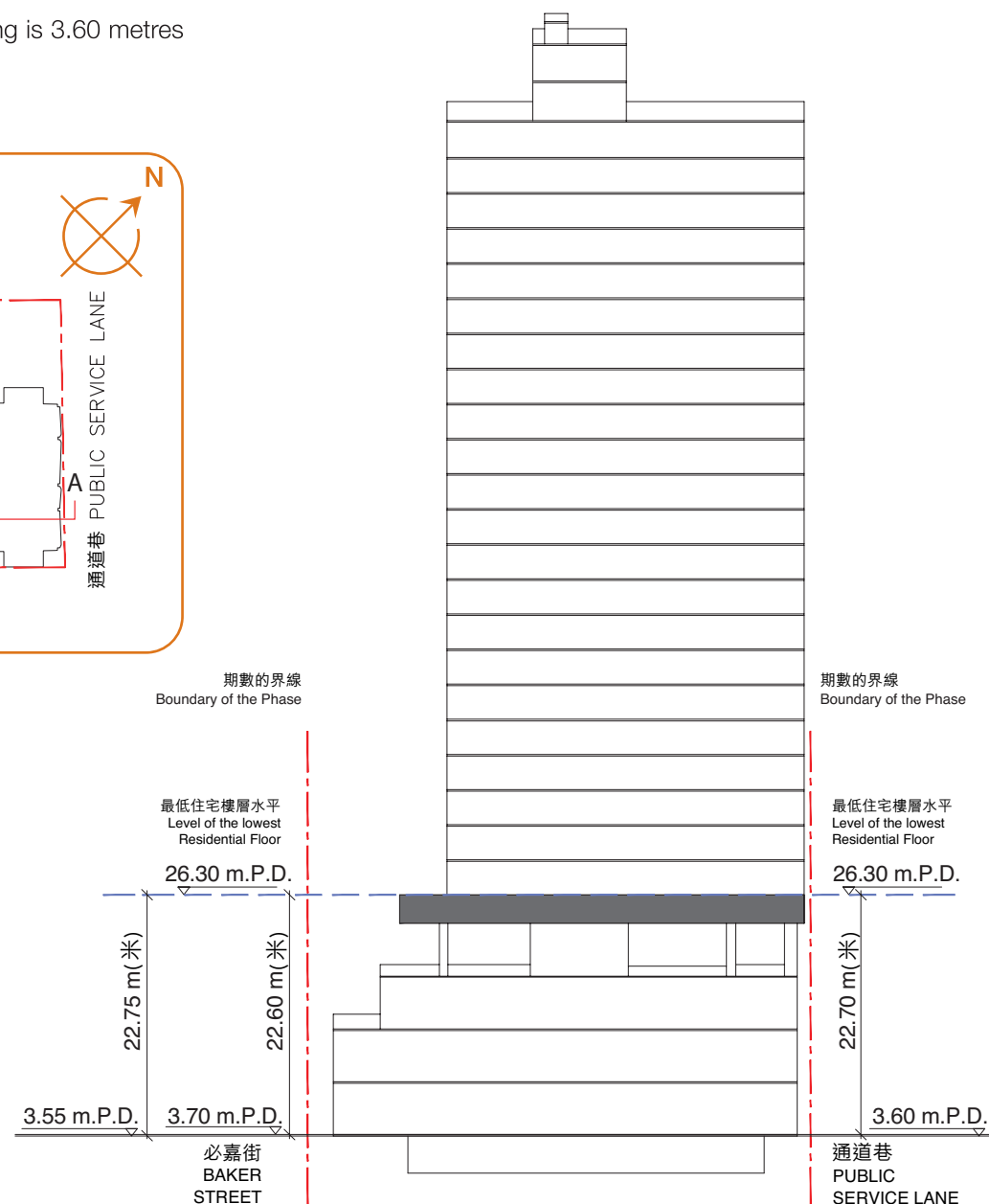
CROSS - SECTION PLAN A-A

1. 毗鄰建築物的一段必嘉街為香港主水平基準以上3.55至3.70米。
2. 毗鄰建築物的一段通道巷為香港主水平基準以上3.60米。
1. The part of Baker Street adjacent to the building is 3.55 to 3.70 metres above the Hong Kong Principal Datum.
2. The part of Public Service Lane adjacent to the building is 3.60 metres above the Hong Kong Principal Datum.



圖例 LEGEND

- 期數的界線
Boundary of the Phase
- ▽ 香港主水平基準以上高度(米)
Height in metres above the Hong Kong Principal Datum (m.P.D.)
- 虛線為該建築物最低住宅層水平
Dotted line denotes the level of the lowest residential floor of the building



頂層天台	TOP ROOF	天台	ROOF
高層天台 2	UPPER ROOF 2	天台 / 機電房	ROOF / PLANT ROOM
高層天台 1	UPPER ROOF 1	機電房	PLANT ROOM
天台	ROOF	私人天台 / 機電房	PRIVATE ROOF / PLANT ROOM
29樓	29/F	住宅單位	RESIDENTIAL PROPERTIES
28樓	28/F	住宅單位	RESIDENTIAL PROPERTIES
27樓	27/F	住宅單位	RESIDENTIAL PROPERTIES
26樓	26/F	住宅單位	RESIDENTIAL PROPERTIES
25樓	25/F	住宅單位	RESIDENTIAL PROPERTIES
23樓	23/F	住宅單位	RESIDENTIAL PROPERTIES
22樓	22/F	住宅單位	RESIDENTIAL PROPERTIES
21樓	21/F	住宅單位	RESIDENTIAL PROPERTIES
20樓	20/F	住宅單位	RESIDENTIAL PROPERTIES
19樓	19/F	住宅單位	RESIDENTIAL PROPERTIES
18樓	18/F	住宅單位	RESIDENTIAL PROPERTIES
17樓	17/F	住宅單位	RESIDENTIAL PROPERTIES
16樓	16/F	住宅單位	RESIDENTIAL PROPERTIES
15樓	15/F	住宅單位	RESIDENTIAL PROPERTIES
12樓	12/F	住宅單位	RESIDENTIAL PROPERTIES
11樓	11/F	住宅單位	RESIDENTIAL PROPERTIES
10樓	10/F	住宅單位	RESIDENTIAL PROPERTIES
9樓	9/F	住宅單位	RESIDENTIAL PROPERTIES
8樓	8/F	住宅單位	RESIDENTIAL PROPERTIES
7樓	7/F	住宅單位	RESIDENTIAL PROPERTIES
6樓	6/F	住宅單位	RESIDENTIAL PROPERTIES
5樓	5/F	住宅單位	RESIDENTIAL PROPERTIES
		轉接層	TRANSFER PLATE
3樓	3/F	平台花園 / 機電房	PODIUM GARDEN / PLANT ROOM
2樓	2/F	康樂設施 / 機電房	RECREATIONAL FACILITIES/ PLANT ROOM
1樓	1/F	商舖 / 餐廳 / 機電房	SHOP/ RESTAURANT/ PLANT ROOM
地下	G/F	商舖 / 餐廳 / 機電房 / 入口大堂	SHOP/ RESTAURANT/ PLANT ROOM/ ENTRANCE LOBBY
地庫	BASEMENT	機電房	PLANT ROOM

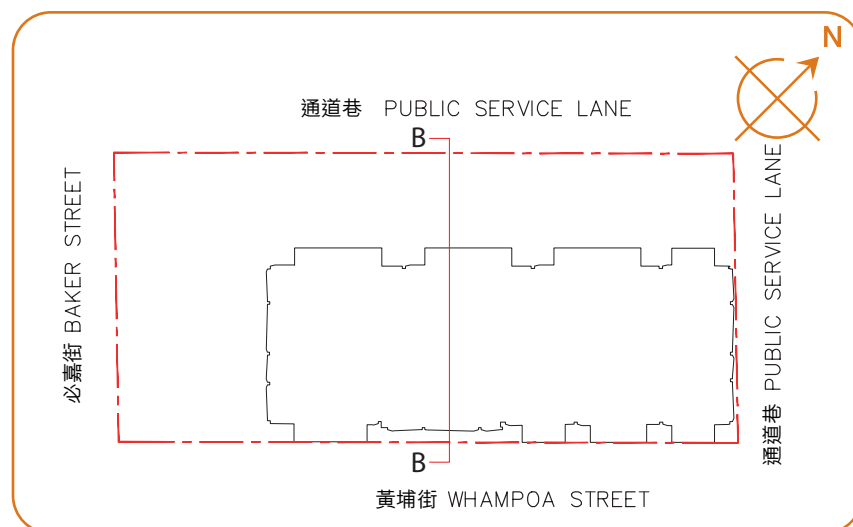
18 期數中的建築物的橫截面圖

CROSS-SECTION PLAN OF BUILDING IN THE PHASE

橫截面圖 B-B

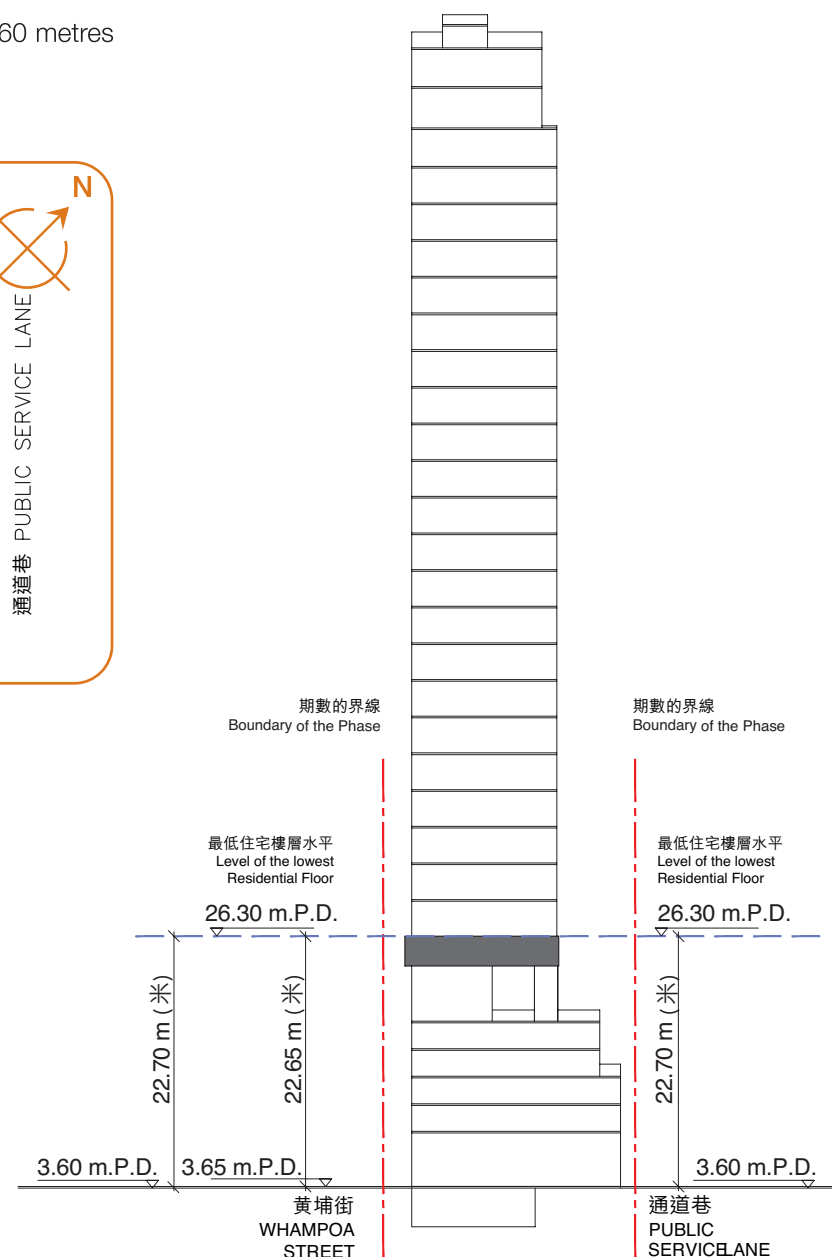
CROSS - SECTION PLAN B -B

1. 毗鄰建築物的一段黃埔街為香港主水平基準以上3.60至3.65米。
2. 毗鄰建築物的一段通道巷為香港主水平基準以上3.60米。
1. The part of Whampoa Street adjacent to the building is 3.60 to 3.65 metres above the Hong Kong Principal Datum.
2. The part of Public Service Lane adjacent to the building is 3.60 metres above the Hong Kong Principal Datum.



圖例 LEGEND

- 期數的界線
Boundary of the Phase
- ▽ 香港主水平基準以上高度(米)
Height in metres above the Hong Kong Principal Datum (m.P.D.)
- 虛線為該建築物最低住宅層水平
Dotted line denotes the level of the lowest residential floor of the building



頂層天台	TOP ROOF	天台	ROOF
高層天台 2	UPPER ROOF 2	天台 / 機電房	ROOF / PLANT ROOM
高層天台 1	UPPER ROOF 1	機電房	PLANT ROOM
天台	ROOF	私人天台 / 機電房	PRIVATE ROOF / PLANT ROOM
29樓	29/F	住宅單位	RESIDENTIAL PROPERTIES
28樓	28/F	住宅單位	RESIDENTIAL PROPERTIES
27樓	27/F	住宅單位	RESIDENTIAL PROPERTIES
26樓	26/F	住宅單位	RESIDENTIAL PROPERTIES
25樓	25/F	住宅單位	RESIDENTIAL PROPERTIES
23樓	23/F	住宅單位	RESIDENTIAL PROPERTIES
22樓	22/F	住宅單位	RESIDENTIAL PROPERTIES
21樓	21/F	住宅單位	RESIDENTIAL PROPERTIES
20樓	20/F	住宅單位	RESIDENTIAL PROPERTIES
19樓	19/F	住宅單位	RESIDENTIAL PROPERTIES
18樓	18/F	住宅單位	RESIDENTIAL PROPERTIES
17樓	17/F	住宅單位	RESIDENTIAL PROPERTIES
16樓	16/F	住宅單位	RESIDENTIAL PROPERTIES
15樓	15/F	住宅單位	RESIDENTIAL PROPERTIES
12樓	12/F	住宅單位	RESIDENTIAL PROPERTIES
11樓	11/F	住宅單位	RESIDENTIAL PROPERTIES
10樓	10/F	住宅單位	RESIDENTIAL PROPERTIES
9樓	9/F	住宅單位	RESIDENTIAL PROPERTIES
8樓	8/F	住宅單位	RESIDENTIAL PROPERTIES
7樓	7/F	住宅單位	RESIDENTIAL PROPERTIES
6樓	6/F	住宅單位	RESIDENTIAL PROPERTIES
5樓	5/F	住宅單位	RESIDENTIAL PROPERTIES
		轉接層	TRANSFER PLATE
3樓	3/F	平台花園 / 機電房	PODIUM GARDEN / PLANT ROOM
2樓	2/F	康樂設施 / 機電房	RECREATIONAL FACILITIES/ PLANT ROOM
1樓	1/F	商舖 / 餐廳 / 機電房	SHOP/ RESTAURANT/ PLANT ROOM
地下	G/F	商舖 / 餐廳 / 機電房 / 入口大堂	SHOP/ RESTAURANT/ PLANT ROOM/ ENTRANCE LOBBY
地庫	BASEMENT	機電房	PLANT ROOM

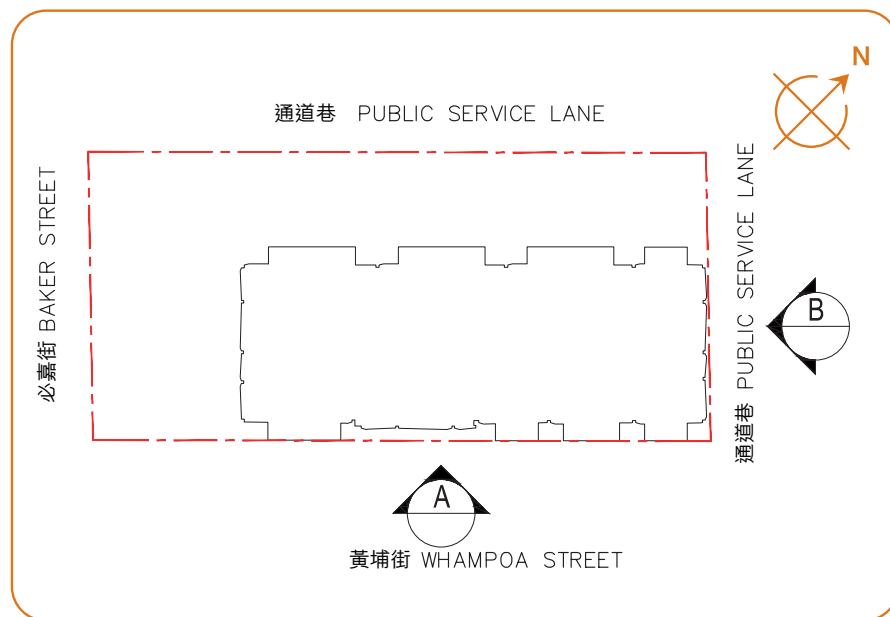
19 立面圖 ELEVATION PLAN

期數的認可人士已證明本圖所顯示的立面：

1. 以2022年7月18日的情況為準的期數的經批准的建築圖則為基礎擬備；及
2. 大致上與期數的外觀一致。

Authorized Person for the Phase certified that the elevations shown on these plans:

1. are prepared on the basis of the approved building plans for the Phase as of 18th July 2022; and
2. are in general accordance with the outward appearance of the Phase.

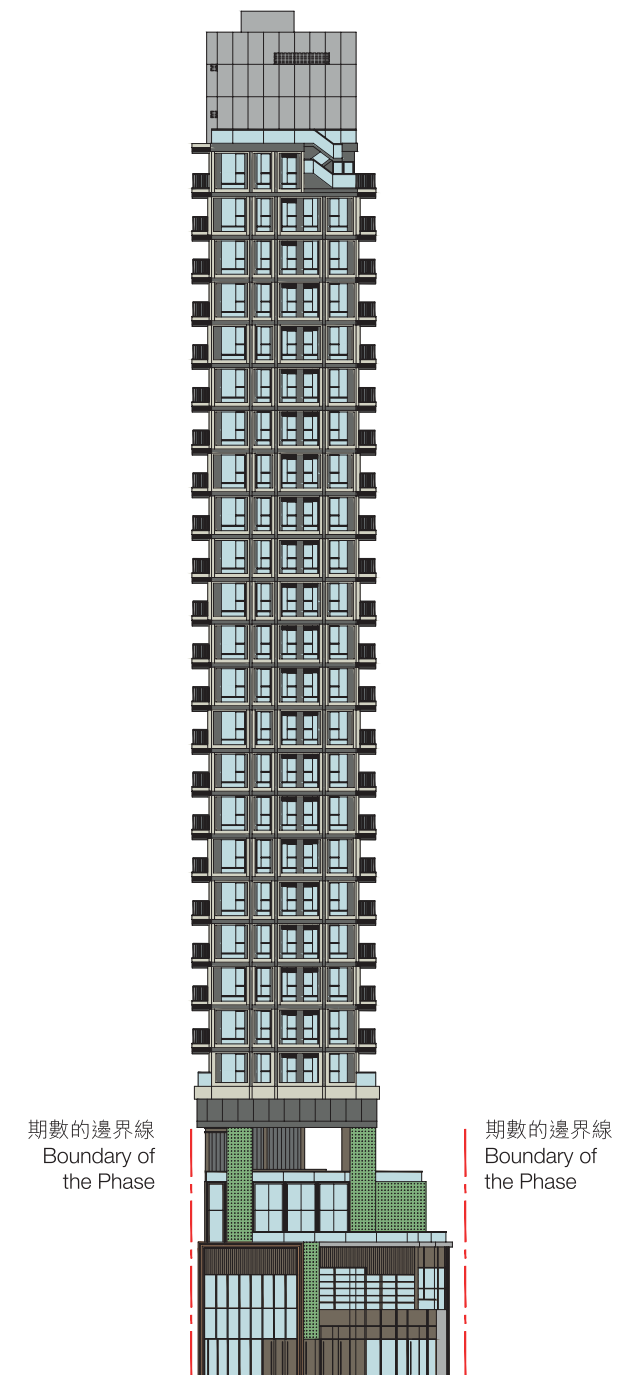


圖例 LEGEND

- 期數的邊界線
Boundary of the Phase



立面圖 A
ELEVATION PLAN A



立面圖 B
ELEVATION PLAN B

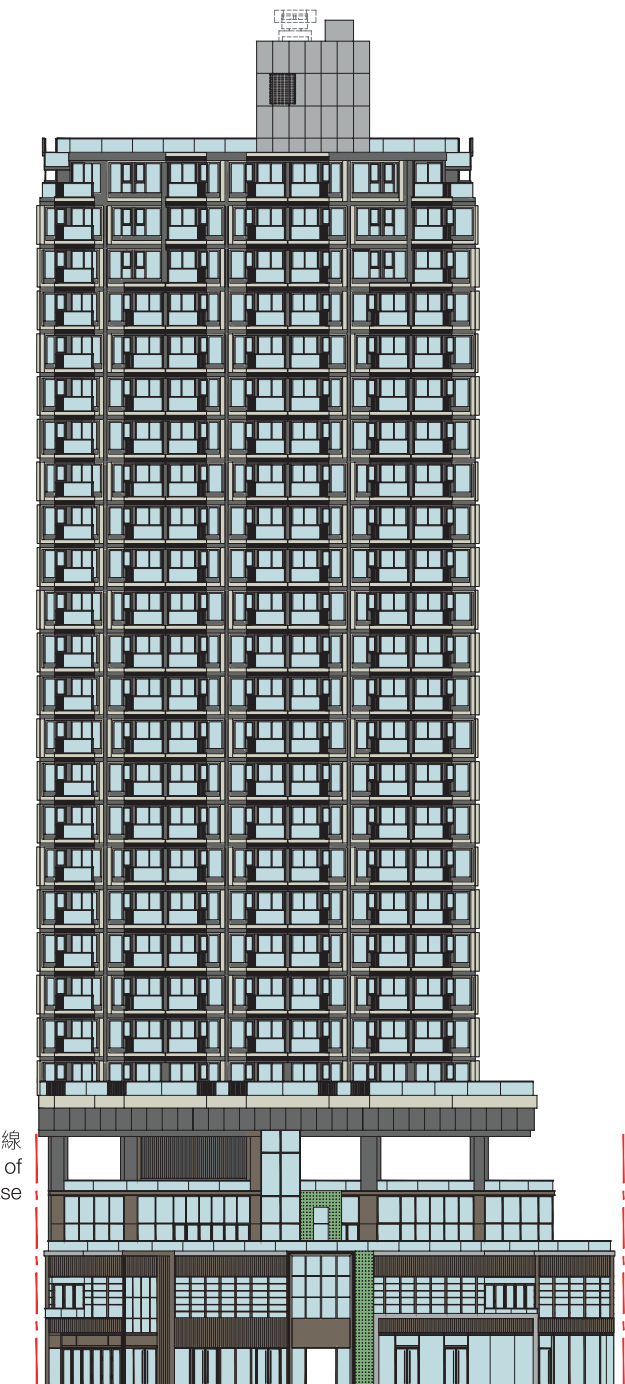
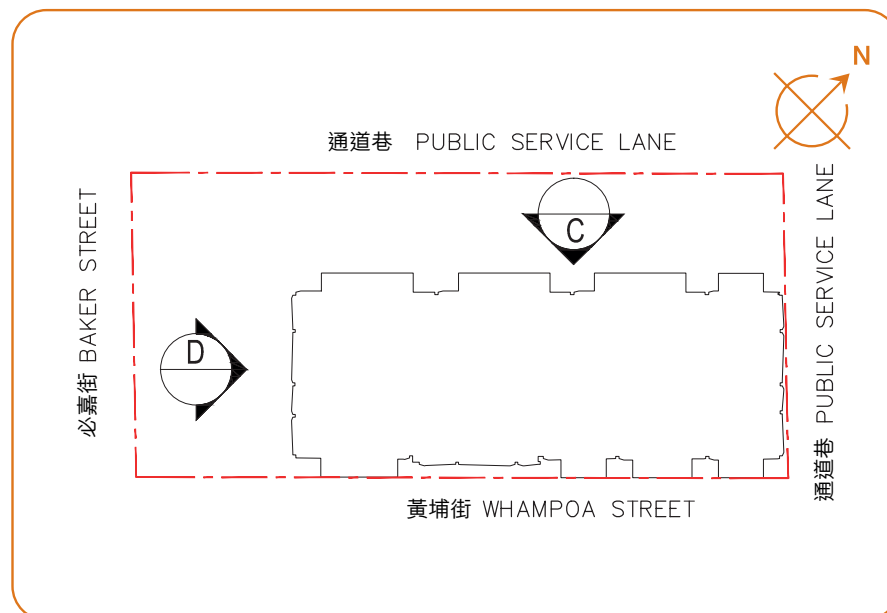
19 立面圖 ELEVATION PLAN

期數的認可人士已證明本圖所顯示的立面：

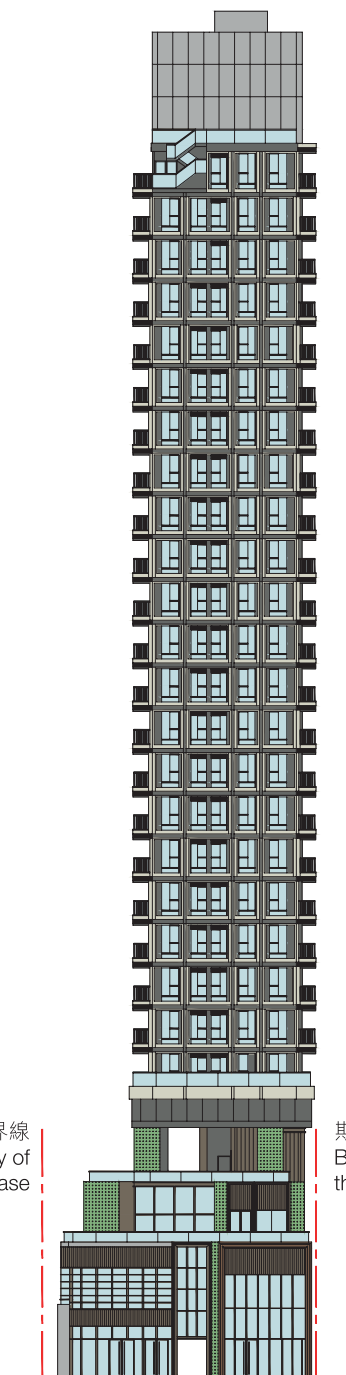
1. 以2022年7月18日的情況為準的期數的經批准的建築圖則為基礎擬備；及
2. 大致上與期數的外觀一致。

Authorized Person for the Phase certified that the elevations shown on these plans:

1. are prepared on the basis of the approved building plans for the Phase as of 18th July 2022; and
2. are in general accordance with the outward appearance of the Phase.



立面圖 C
ELEVATION PLAN C



立面圖 D
ELEVATION PLAN D

圖例 LEGEND

- 期數的邊界線
Boundary of the Phase

20 期數中的公用設施的資料

INFORMATION ON COMMON FACILITIES IN THE PHASE

公用設施 Common Facilities	有上蓋遮蓋之面積 Covered Area		沒有上蓋遮蓋之面積 Uncovered Area		總面積 Total Area	
	平方米 sq. m.	平方呎 sq. ft.	平方米 sq. m.	平方呎 sq. ft.	平方米 sq. m.	平方呎 sq. ft.
(a) 住客會所(包括供住客使用的任何康樂設施) Residents' Clubhouse (including any recreational facilities for residents' use)	316.974	3412	288.918	3110	605.892	6522
(b) 位於期數中的建築物的天台或在天台和最低一層住宅樓層之間的任何一層的、供住客使用的公用花園或遊樂地方(不論是稱為公用空中花園或其他名稱) Communal garden or play area for residents' use on the roof, or on any floor between the roof and the lowest residential floor, of a building in the Phase (whether known as a communal sky garden or otherwise)	不適用 Not applicable					
(c) 位於期數中的建築物的最低一層住宅樓層以下的、供住客使用的公用花園或遊樂地方(不論是稱為有蓋及園景的遊樂場或有其他名稱) Communal garden or play area for residents' use below the lowest residential floor of a building in the Phase (whether known as a covered and landscaped play area or otherwise)	383.492	4128	28.450	306	411.942	4434

備註：

1. 以平方呎顯示之面積均依據1平方米 = 10.764平方呎換算，並四捨五入至整數。
2. 以上「住客會所」的面積是供整個發展項目（由第一期、第二期及第三期組成）使用。各期數內的公用設施為供所有期數的住客及其訪客使用的公用及共享設施。詳情請參閱公契。
3. 以上「位於期數中的建築物的最低一層住宅樓層以下的、供住客使用的公用花園或遊樂地方」的面積是供整個發展項目（由第一期、第二期及第三期組成）使用。各期數內的公用設施為供所有期數的住客及其訪客使用的公用及共享設施。詳情請參閱公契。
4. 康樂設施有上蓋遮蓋之面積為核准圖則內獲建築事務監督豁免之康樂設施面積。康樂設施沒有上蓋遮蓋之面積包括泳池及曬台。

Notes :

1. Areas in square feet are converted at a rate of 1 square metre to 10.764 square feet and rounded to the nearest integer.
2. The area of "Residents' Clubhouse" as specified above is for serving the whole Development comprising Phase 1, Phase 2 and Phase 3. Common facilities of all phases are intended for the common use and the benefit of the owner of residential units and their bona fide visitors of all phases. Please refer to the Deed of Mutual Covenant for details.
3. The area of "Communal garden or play area for residents' use below the lowest residential floor of a building in the Phase" as specified above is for serving the whole Development comprising Phase 1, Phase 2 and Phase 3. Common facilities of all phases are intended for the common use and the benefit of the owner of residential units and their bona fide visitors of all phases. Please refer to the Deed of Mutual Covenant for details.
4. The covered area of recreational facilities is the exempted recreational facilities area permitted by the Building Authority as shown on the approved building plans. The uncovered area of recreational facilities includes the swimming pool and sun deck.

21 閱覽圖則及公契 INSPECTION OF PLANS AND DEED OF MUTUAL COVENANT

1. 備有關乎本發展項目的分區計劃大綱圖的文本供閱覽的互聯網網站的網址為 www.ozp.tpb.gov.hk
2. (a) 以下文件的文本存放在發售有關住宅物業的售樓處，以供閱覽 —
本住宅物業的每一公契在將本住宅物業提供出售的日期的最新擬稿。
(b) 無須為閱覽付費。

1. Copies of outline zoning plans relating to the Development are available for inspection at www.ozp.tpb.gov.hk
2. (a) Copies of the following document are available for inspection at the place at which the residential property is offered to be sold —
the latest draft of every deed of mutual covenant as in respect of the residential property at the date on which the residential property is offered to be sold.
(b) The inspection is free of charge.

22 裝置、裝修物料及設備 FITTINGS, FINISHES AND APPLIANCES

1. 外部裝修物料

		描述	
(a)	外牆	裝修物料的類型	基座：綠化牆、石飾板、玻璃幕牆、玻璃飾板、玻璃欄河、鋁格柵、鋁飾板、鋁飾裝飾及鋁百葉 住宅大樓：玻璃幕牆、鋁窗、玻璃格柵、玻璃欄河、鋁飾板、鋁飾裝飾、玻璃飾板及鋁百葉
(b)	窗	框的用料	鋁質氟化碳塗層窗框
		玻璃的用料	低輻射鍍膜雙層中空玻璃
(c)	窗台	用料及窗台板的裝修物料	不適用
(d)	花槽	裝修物料的類型	不適用
(e)	陽台或露台	(i) 裝修物料的類型	i) 露台：裝有玻璃格柵及玻璃欄河 地台：木平台及瓷磚 牆身：鋁質飾板及瓷磚 天花：鋁質假天花 ii) 陽台：不適用
		(ii) 是否有蓋	i) 露台：設有上蓋（29樓的C及J單位除外） ii) 陽台：不適用
(f)	乾衣設施	類型及用料	不適用

2. 室內裝修物料

		描述			
			牆壁	地板	天花板
(a)	大堂	地下住宅入口大堂的裝修物料的類型	外露牆身鋪砌金屬、天然石及牆布	天然石	中密度纖維板假天花設金屬飾面
		住宅樓層電梯大堂的裝修物料的類型	外露牆身鋪砌天然石、木材飾面及牆布	天然石	中密度纖維板假天花設金屬飾面及木材髹上乳膠漆
			牆壁	天花板	
(b)	內牆及天花板	客廳 / 飯廳的裝修物料的類型	乳膠漆、半光漆、鏡飾面及金屬條 (只適用於29樓的C及J單位)	乳膠漆、防火膠板、金屬條、石膏板假天花及燈槽表面髹上乳膠漆 (只適用於8樓的B單位)	
			乳膠漆及半光漆 (只適用於B及K單位；8樓的B單位除外)		
			乳膠漆、半光漆及納米技術智慧材料 (只適用於A、L及M單位)	乳膠漆、金屬條、石膏板假天花及燈槽表面髹上乳膠漆(除上述單位外)	
			半光漆、木飾面、木條、金屬條、牆紙及玻璃 (只適用於8樓的B單位)		
			乳膠漆、半光漆、鏡飾面、金屬條及納米技術智慧材料 (除上述單位外)		
		睡房的裝修物料的類型	木飾面、金屬、牆紙、鏡及玻璃(只適用於8樓B單位的睡房1)	乳膠漆、木飾面及石膏板假天花表面髹上乳膠漆(只適用於8樓B單位的睡房1)	
			木飾面、金屬、牆紙及玻璃(只適用於8樓B單位的睡房2)	乳膠漆、金屬及石膏板假天花表面髹上乳膠漆(只適用於8樓B單位的睡房2)	
			乳膠漆(除上述單位外)	乳膠漆(除上述單位外)	

22 裝置、裝修物料及設備 FITTINGS, FINISHES AND APPLIANCES

2. 室內裝修物料

		描述				
			地板	牆腳線		
(c)	內部地板	客廳 / 飯廳的用料	天然石（只適用於8樓的B單位）	金屬腳線（只適用於8樓的B單位）		
			瓷磚（除上述單位外）	木腳線（只適用於29樓的C及J單位）		
		睡房的用料	天然石（只適用於8樓的B單位）	金屬腳線及木腳線（除上述單位外）		
			複合木地板及金屬條（除上述單位外）	金屬腳線（只適用於8樓B單位的睡房2）		
(d)	浴室		牆壁	地板	天花板	
		(i) 裝修物料的類型	外露牆身鋪砌瓷磚、金屬、實心材料及玻璃	瓷磚	石膏板假天花表面髹上乳膠漆	
		(ii) 牆壁的裝修物料是否鋪至天花板	裝修物料鋪至假天花底			
(e)	廚房		牆壁	地板	天花板	灶台
		(i) 裝修物料的類型	外露牆身鋪砌石英石（只適用於29樓的C及J單位）	天然石 （只適用於8樓的B單位）	乳膠漆、防火膠板、金屬條、石膏板假天花及燈槽表面髹上乳膠漆（只適用於8樓的B單位）	石英石 （只適用於29樓的C及J單位）
			外露牆身髹上半光漆、鋪砌不銹鋼及納米技術智慧材料（只適用於8樓的B單位）			
			外露牆身鋪砌不銹鋼及納米技術智慧材料（除上述單位外）	瓷磚（除上述單位外）	乳膠漆、石膏板假天花及燈槽表面髹上乳膠漆（除上述單位外）	納米技術智慧材料（除上述單位外）
		(ii) 牆壁的裝修物料是否鋪至天花板	裝修物料鋪至吊櫃底			

3. 室內裝置

		描述			
			用料	裝修物料	配件
(a)	門	單位大門	防火實心木掩門	木飾面及半光漆（只適用於E及F單位） 半光漆（除上述單位外）	電子門鎖、隱藏式氣鼓、防盜眼及門擋
		睡房 / 睡房1 / 睡房2 / 主人睡房門	中空木掩門	半光漆（只適用於B及N單位、27樓至29樓的C及J單位；8樓的B單位除外）	門鎖及門擋
			中空木趟門	半光漆（只適用於K單位） 半光漆及金屬（除8樓的B單位及上述單位外）	門鎖
		浴室 / 主人浴室門	中空百葉木趟門	半光漆（只適用於N單位）	門鎖
			中空百葉木掩門	半光漆（只適用於B、C、J及K單位） 半光漆及金屬（除上述單位外）	門鎖及門擋
		儲物室門	金屬掩門（只適用於29樓的C及J單位）	氟化碳塗層鋁框	門鎖
		露台門	鋁門框及中空玻璃趟門	氟化碳塗層鋁框	門鎖
		露台 / 工作平台門	鋁門框及中空玻璃趟門	氟化碳塗層鋁框	門鎖

22 裝置、裝修物料及設備 FITTINGS, FINISHES AND APPLIANCES

3. 室內裝置

		描述			
			用料	裝修物料	配件
(a)	門	平台門	鋁門框及中空玻璃趟門（只適用於5樓的單位）	氟化碳塗層鋁框	門鎖
			鋁門框及中空玻璃趟摺門（只適用於29樓的C及J單位）	氟化碳塗層鋁框	門鎖
		私人天台門	金屬掩門	氟化碳塗層鋁框	門鎖
			裝置及設備	類型	用料
(b)	浴室	(i) 裝置及設備的類型及用料	櫃	洗手盆檯面	實心材料
				洗手盆櫃	木製櫃配實心材料飾面、膠板飾面及金屬飾面
				鏡櫃	木製櫃配鏡、金屬飾面、膠板飾面及玻璃
			潔具	廁紙架	不銹鋼
				毛巾架	拉絲合金
				掛鈎	拉絲合金
				洗手盆水龍頭	拉絲黃銅
				洗手盆	實心材料
				座廁	搪瓷
				淋浴間	強化玻璃
			設備	設備之品牌及型號，請參閱「設備說明表」	
		(ii) 供水系統的類型及用料	冷水喉採用銅喉，熱水喉採用隔熱絕緣銅喉		
		(iii) 沐浴設施（包括花灑或浴缸（如適用的話））	花灑	花灑水龍頭及花灑套裝	拉絲黃銅
			浴缸	不適用	
		(iv) 浴缸大小（如適用的話）	不適用		
			用料		
(c)	廚房	(i) 洗滌盆的用料	不銹鋼		
		(ii) 供水系統的類型及用料	冷水喉採用銅喉，熱水喉採用隔熱絕緣銅喉		
			用料	裝修物料	
		(iii) 廚櫃的用料及裝修物料	木製廚櫃	吊櫃及高櫃門板配膠板飾面；地櫃門板配岩板及金屬框邊，櫃身膠板飾面及金屬腳線（只適用於29樓的C及J單位） 納米技術智慧材料飾面、膠板飾面及金屬（除上述單位外）	

22 裝置、裝修物料及設備 FITTINGS, FINISHES AND APPLIANCES

3. 室內裝置

		描述			
			用料	裝修物料	
(c)	廚房	(iv) 所有其他裝置及設備的類型	消防裝置及設備	開放式廚房內或附近的天花裝置煙霧探測器及消防花灑頭	
			其他裝置	黃銅水龍頭	
			其他設備	設備之品牌及型號，請參閱「設備說明表」	
				類型	用料
(d)	睡房 / 睡房1 / 睡房2 / 主人睡房	裝置的類型及用料（包括嵌入式衣櫃）	嵌入式衣櫃（所有樓層的 A、L及M單位及8樓的B單位除外）	衣櫃	木製櫃、金屬框、膠板飾面及玻璃
			其他裝置	不適用	不適用
(e)	電話	接駁點的位置及數目	請參閱「住宅單位機電裝置位置及數量說明表」		
(f)	天線	接駁點的位置及數目	請參閱「住宅單位機電裝置位置及數量說明表」		
(g)	電力裝置	(i) 供電附件（包括安全裝置）	供電附件	提供電掣及插座之面板	
			安全裝置	單相電力並裝妥微型斷路器配電箱	
		(ii) 導管是隱藏或外露	導管是部分隱藏及部分外露 ¹		
		(iii) 電插座及空調機接駁點的位置及數目	請參閱「住宅單位機電裝置位置及數量說明表」		
(h)	氣體供應	類型	煤氣		
		系統	提供煤氣喉接駁煤氣煮食爐（A、L及M單位除外）及煤氣熱水爐，並有獨立煤氣錶		
		位置	請參閱「住宅單位機電裝置位置及數量說明表」		
(i)	洗衣機接駁點	位置	請參閱「住宅單位機電裝置位置及數量說明表」		
		設計	設有洗衣機來水及去水接駁喉位		
(j)	供水	(i) 水管的用料	冷水喉採用銅喉，熱水喉採用隔熱絕緣銅喉		
		(ii) 水管是隱藏或外露	冷熱水喉是部分隱藏及部分外露 ²		
		(iii)有否熱水供應	開放式廚房及浴室供應熱水		

備註：

1. 除部分隱藏於混凝土內之導管外，其他部分的導管均為外露。外露的導管可能被假天花、假陣、貯存櫃、覆面、非混凝土間牆、指定之槽位或其他物料遮蓋或隱藏。
2. 除部分隱藏於混凝土內之水管外，其他部分的水管均為外露。外露的水管可能被假天花、假陣、貯存櫃、覆面、非混凝土間牆、指定之槽位或其他物料遮蓋或隱藏。

22 裝置、裝修物料及設備 FITTINGS, FINISHES AND APPLIANCES

4. 雜項

		描述					
				住宅升降機		商用升降機	
(a)	升降機	(i) 品牌名稱及產品型號	品牌名稱	富士達		富士達	
			產品型號	ZEXIA		REXIA	
		(ii) 升降機的數目及到達的樓層	升降機的數目	3		2	
			到達的樓層	升降機編號	升降機到達的樓層	升降機編號	升降機到達的樓層
				L1	地下、1樓至3樓、5樓至12樓、15樓至23樓及25樓至29樓	L4	地下、1樓及2樓
				L2	地下、1樓至3樓、5樓至12樓、15樓至23樓及25樓至29樓	L5	地下及1樓
				L3	地下、1樓至3樓、5樓至12樓、15樓至23樓、25樓至29樓及天台		
(b)	信箱	用料	不銹鋼信箱配木材飾面門板及牆布飾面門板				
(c)	垃圾收集	(i) 垃圾收集的方法	由清潔工人收集垃圾				
		(ii) 垃圾房的位置	各住宅層之公用地方設有垃圾及物料回收房及地下設有中央垃圾及物料回收房				
			水錶	電錶		氣體錶	
(d)	水錶、電錶及氣體錶	(i) 位置	每層之公共水錶櫃	每層之公共電錶房		浴室高位(只適用於J及K單位，29樓的J單位除外)	
						廚房高位(只適用於N單位)	
						私人天台低位(只適用於29樓的C及J單位)	
						露台高位(除上述單位外)	
		(ii) 就住宅單位而言是獨立抑或公用的錶	獨立	獨立		獨立	

5. 保安設施

		描述	
保安系統及設備	入口通道控制及保安系統	地下入口大堂設有訪客對講機、智能咭閱讀器及密碼門鎖。住宅大樓升降機內另設有智能咭閱讀器供住戶之用。	
	閉路電視	閉路電視設於地下住宅入口大堂、所有升降機內及公共地方，並直接連接地下接待處	
嵌入式的裝備的細節		各住宅單位均設有對講機，並直接連接地下住宅入口大堂之對講機系統	
嵌入式的裝備的位置		請參閱「住宅單位機電裝置位置及數量說明表」	

賣方承諾如該項目中沒有安裝指明的品牌名稱或產品型號的升降機或設備，便會安裝品質相若的升降機或設備。

22 裝置、裝修物料及設備 FITTINGS, FINISHES AND APPLIANCES

1. Exterior Finishes

		Description	
(a)	External wall	Type of finishes	Podium: green wall, stone cladding, curtain wall, glass cladding, glass balustrade, aluminium grille, aluminium cladding, aluminium feature and aluminium louvre Residential tower: curtain wall, aluminium window, glass grille, glass balustrade, aluminium cladding, aluminium feature, glass cladding and aluminium louvre
(b)	Window	Material of frame	Aluminium window frames finished with fluorocarbon coating
		Material of glass	Insulated Glazing Unit (IGU) with low-e coating glass
(c)	Bay window	Material and window sill finishes	Not applicable
(d)	Planter	Type of finishes	Not applicable
(e)	Verandah or balcony	(i) Type of finishes	i) Balcony: Installed with glass grille and glass balustrade Floor: Timber deck and ceramic tile Wall: Aluminium cladding and ceramic tile Ceiling: Aluminium false ceiling ii) Verandah: Not applicable
		(ii) Whether it is covered	i) Balcony: Covered (except Flats C and J of 29/F) ii) Verandah: Not applicable
(f)	Drying facilities for clothing	Type and material	Not applicable

2. Interior Finishes

		Description			
			Wall	Floor	Ceiling
(a)	Lobby	Type of G/F residential entrance lobby finishes	Metal, natural stone and wallcovering for the exposed surface	Natural stone	Medium density fiberboard false ceiling with metal finish
		Type of lift lobby finishes for residential floors	Natural stone, timber veneer and wallcovering for the exposed surface	Natural stone	Medium density fiberboard false ceiling with metal finish and timber with emulsion paint
			Wall	Ceiling	
(b)	Internal wall and ceiling	Type of living room / dining room finishes	Emulsion paint, semi-gloss lacquer, mirror finish and metal strip (For Flats C and J of 29/F only)	Emulsion paint, fire rated plastic laminate, metal strip, gypsum board false ceiling and light trough with emulsion paint (For Flat B of 8/F only)	
			Emulsion paint and semi-gloss lacquer (For Flats B and K only, except Flat B of 8/F)		

22 裝置、裝修物料及設備 FITTINGS, FINISHES AND APPLIANCES

2. Interior Finishes

		Description					
			Wall	Ceiling			
(b)	Internal wall and ceiling	Type of living room / dining room finishes	Emulsion paint, semi-gloss lacquer and nanotechnology smart material (For Flats A, L and M only)	Emulsion paint, metal strip, gypsum board false ceiling and light trough with emulsion paint (except the above residential properties)			
			Semi-gloss lacquer, timber veneer, timber strip, metal strip, wallpaper and glass (For Flat B of 8/F only)				
			Emulsion paint, semi-gloss lacquer, mirror finish, metal strip and nanotechnology smart material (except the above residential properties)				
		Bedroom finishes	Timber veneer, metal, wallpaper, mirror and glass (For Bedroom 1 of Flat B of 8/F only)	Emulsion paint, timber veneer and gypsum board false ceiling with emulsion paint (For Bedroom 1 of Flat B of 8/F only)			
			Timber veneer, metal, wallpaper and glass (For Bedroom 2 of Flat B of 8/F only)	Emulsion paint, metal and gypsum board false ceiling with emulsion paint (For Bedroom 2 of Flat B of 8/F only)			
			Emulsion paint (except the above residential properties)	Emulsion paint (except the above residential properties)			
			Floor	Skirting			
(c)	Internal floor	Material for living room / dining room	Natural stone (For Flat B of 8/F only)	Metal skirting (For Flat B of 8/F only)			
			Ceramic tile (except the above residential properties)	Timber skirting (For Flats C and J of 29/F only)			
		Material for bedroom	Natural stone (For Flat B of 8/F only)	Metal skirting and timber skirting (except the above residential properties)			
			Engineered timber flooring and metal strip (except the above residential properties)	Metal skirting (For Bedroom 2 of Flat B of 8/F only)			
				Timber skirting (except the above residential properties)			
			Wall	Floor	Ceiling		
(d)	Bathroom	(i) Type of finishes	Ceramic tile, metal, solid surfacing and glass for the exposed surface	Ceramic tile	Gypsum board false ceiling with emulsion paint		
		(ii) Whether the wall finishes run up to the ceiling	Up to the bottom level of false ceiling				
			Wall	Floor	Ceiling	Cooking Bench	
(e)	Kitchen	(i) Type of finishes	Quartz stone for the exposed surface (For Flats C and J of 29/F only)	Natural stone (For Flat B of 8/F only)	Emulsion paint, fire rated plastic laminate, metal strip, gypsum board false ceiling and light trough with emulsion paint (For Flat B of 8/F only)		
			Semi-gloss lacquer, stainless steel and nanotechnology smart material for the exposed surface (For Flat B of 8/F only)				
			Stainless steel and nanotechnology smart material for the exposed surface (except the above residential properties)	Ceramic tile (except the above residential properties)	Emulsion paint, gypsum board false ceiling and light trough with emulsion paint (except the above residential properties)		
		(ii) Whether the wall finishes run up to the ceiling		Up to the bottom level of overhead cabinet			

22 裝置、裝修物料及設備 FITTINGS, FINISHES AND APPLIANCES

3. Interior Fittings

		Description			
			Material	Finishes	Accessories
(a)	Doors	Main entrance door	Fire rated solid core timber swing door	Wood veneer and semi-gloss lacquer (For Flats E and F only) Semi-gloss lacquer (except the above residential properties)	Digital lockset, concealed door closer, eye viewer and door stopper
		Bedroom / Bedroom 1 / Bedroom 2 / Master bedroom door	Hollow core timber swing door	Semi-gloss lacquer (For Flats B and N, Flats C and J of 27/F - 29/F only, except Flat B of 8/F)	Door lock and door stopper
			Hollow core timber sliding door	Semi-gloss lacquer (For Flat K only) Semi-gloss lacquer and metal (except the above residential properties and Flat B of 8/F)	Door lock
		Bathroom / Master bathroom door	Hollow core timber sliding door with louvre	Semi-gloss lacquer (For Flat N only)	Door lock
			Hollow core timber swing door with louvre	Semi-gloss lacquer (For Flats B, C, J and K only) Semi-gloss lacquer and metal (except the above residential properties)	Door lock and door stopper
		Store room door	Metal swing door (For Flats C and J of 29/F only)	Fluorocarbon-coated aluminium frame	Door lock
		Balcony door	Aluminium door frame and insulated glass unit sliding door	Fluorocarbon-coated aluminium frame	Door lock
		Balcony / Utility platform door	Aluminium door frame and insulated glass unit sliding door	Fluorocarbon-coated aluminium frame	Door lock
		Flat roof door	Aluminium door frame and insulated glass unit sliding door (For residential properties of 5/F only)	Fluorocarbon-coated aluminium frame	Door lock
			Aluminium door frame and insulated glass unit slide-folding door (For Flats C and J of 29/F only)	Fluorocarbon-coated aluminium frame	Door lock
		Private roof door	Metal swing door	Fluorocarbon-coated aluminium frame	Door lock
			Fittings and Equipment	Type	Material
(b)	Bathroom	(i) Type and material of fittings and equipment	Cabinet	Basin countertop	Solid surfacing
				Basin cabinet	Timber cabinet with solid surfacing, plastic laminate and metal
				Mirror cabinet	Timber cabinet with mirror, metal, plastic laminate and glass

22 裝置、裝修物料及設備 FITTINGS, FINISHES AND APPLIANCES

3. Interior Fittings

		Description				
			Fittings and Equipment	Type	Material	
(b)	Bathroom	(i) Type and material of fittings and equipment	Bathroom fittings	Paper holder	Stainless steel	
				Towel holder	Brushed finish zinc alloy	
				Robe hook	Brushed finish zinc alloy	
				Wash basin mixer	Brushed finish brass	
				Wash basin	Solid surfacing	
				Water closet	Vitreous china	
				Shower compartment	Tempered glass	
			Appliances	For the brand name and model number of appliances, please refer to the "Appliances Schedule"		
		(ii) Type and material of water supply system	Copper water pipes for cold water supply and copper water pipes with thermal insulation for hot water supply			
		(iii) Bathing facilities (including shower or bath tub, if applicable)	Shower	Shower mixer and shower set	Brushed finish brass	
			Bath tub	Not applicable		
		(iv) Size of bath tub, if applicable	Not applicable			
			Material			
(c)	Kitchen	(i) Material of sink unit	Stainless steel			
		(ii) Material of water supply system	Copper water pipes for cold water supply and copper water pipes with thermal insulation for hot water supply			
			Material	Finishes		
		(iii) Material and finishes of kitchen cabinet	Timber cabinet	Door panel for wall unit and tall unit in plastic laminate finish; door panel for base unit in ceramic panel with metal frame, carcase in plastic laminate finish and metal skirting (For Flats C and J of 29/F only)		
				Nanotechnology smart material, plastic laminate and metal skirting (except the above residential properties)		
		iv) Type of all other fittings and equipment	Fire service installations and equipment	Ceiling-mounted smoke detector and sprinkler head are fitted in or near open kitchen		
			Other fittings	Brass sink mixer		
			Other equipment	For the brand name and model number of appliances, please refer to the "Appliances Schedule"		

22 裝置、裝修物料及設備 FITTINGS, FINISHES AND APPLIANCES

3. Interior Fittings

		Description			
				Type	Material
(d)	Bedroom / Bedroom 1 / Bedroom 2 / Master Bedroom	Type and material of fittings (including built-in wardrobe)	Built-in wardrobe (except Flats A, L and M of all floors and Flat B of 8/F)	Wardrobe	Wooden cabinet, metal frame, plastic laminate and glass
			Other fittings	Not applicable	Not applicable
(e)	Telephone	Location and number of connection points	Please refer to the "Schedule for the Location and Number of Mechanical and Electrical Provisions of Residential Properties"		
(f)	Aerials	Location and number of connection points	Please refer to the "Schedule for the Location and Number of Mechanical and Electrical Provisions of Residential Properties"		
(g)	Electrical installations	(i) Electrical fittings (including safety devices)	Electrical fittings	Faceplate for all switches and power sockets	
			Safety devices	Single-phase electricity supply with miniature circuit breaker distribution board	
		(ii) Whether conduits are concealed or exposed	Conduits are partly concealed and partly exposed ¹		
		(iii) Location and number of power points and air-conditioner points	Please refer to the "Schedule for the Location and Number of Mechanical and Electrical Provisions of Residential Properties"		
(h)	Gas supply	Type	Towngas		
		System	Gas supply pipe is provided and connected to gas hob (except Flats A, L and M) and gas water heater. Separate gas meter is provided		
		Location	Please refer to the "Schedule for the Location and Number of Mechanical and Electrical Provisions of Residential Properties"		
(i)	Washing machine connection point	Location	Please refer to the "Schedule for the Location and Number of Mechanical and Electrical Provisions of Residential Properties"		
		Design	Drain point and water point are provided for washing machine		
(j)	Water supply	(i) Material of water pipes	Copper water pipes for cold water supply and copper water pipes with thermal insulation for hot water supply		
		(ii) Whether water pipes are concealed or exposed	Both hot and cold water pipes are partly concealed and partly exposed ²		
		(iii) Whether hot water is available	Hot water supply system is provided to open kitchen and bathroom		

Notes :

- Other than those parts of the conduits concealed within the concrete, the rest of them are exposed. The exposed conduits may be covered or hidden by false ceilings, bulkheads, cabinets, claddings, non-concrete partition walls, designated pipe ducts or other materials.
- Other than those parts of the water pipes concealed within the concrete, the rest of them are exposed. The exposed water pipes may be covered or hidden by false ceilings, bulkheads, cabinets, claddings, non-concrete partition walls, designated pipe ducts or other materials.

22 裝置、裝修物料及設備 FITTINGS, FINISHES AND APPLIANCES

4. Miscellaneous

		Description								
				Residential lift				Commercial lift		
(a)	Lifts	(i) Brand name and model number	Brand name	Fujitec				Fujitec		
			Model number	ZEXIA				REXIA		
		(ii) Number and floors served by them	Number of lifts	3				2		
			Floor served by the lifts	Lift no.	Floor served				Lift no.	Floor served
				L1	G/F, 1/F - 3/F, 5/F - 12/F, 15/F - 23/F and 25/F - 29/F				L4	G/F, 1/F - 2/F
				L2	G/F, 1/F - 3/F, 5/F - 12/F, 15/F - 23/F and 25/F - 29/F				L5	G/F and 1/F
				L3	G/F, 1/F - 3/F, 5/F - 12/F, 15/F - 23/F, 25/F - 29/F and Roof					
(b)	Letter box	Material	Stainless steel letterbox with timber veneer door panel and wall covering finish door panel							
(c)	Refuse collection	(i) Means of refuse collection	Collected by cleaners							
		(ii) Location of refuse room	Refuse storage & material recovery room is provided in the common area of each residential floor and refuse storage & material recovery chamber is located on G/F							
			Water meter			Electricity meter			Gas meter	
(d)	Water meter, electricity meter and gas meter	(i) Location	Common water meter cabinet on each floor	Common electrical meter room on each floor	High level of bathroom (For Flats J and K only, except Flat J of 29/F)					
					High level of kitchen (For Flat N only)					
					Low level of private roof (For Flats C and J of 29/F only)					
					High level of balcony (except the above residential properties)					
		(ii) Whether they are separate or communal meters for residential properties	Separate meter	Separate meter			Separate meter			

The vendor undertakes that if lifts or appliances of the specified brand name or model number are not installed in the development, lifts or appliances of comparable quality will be installed.

22

裝置、裝修物料及設備
FITTINGS, FINISHES AND APPLIANCES

5. Security Facilities

	Description	
Security system and equipment	Access control and security system	Visitor panel, smart card reader and security door lock are installed at G/F entrance lobby. Smart card reader is installed inside residential tower lifts
	CCTV	CCTV system is provided at G/F residential entrance lobby, all lifts and common areas, connecting directly to the caretaker's counter on G/F
Details of built-in provisions	Audio door phone in each residential properties is connected to the visitor panel at G/F residential entrance lobby	
Location of built-in provisions	Please refer to the "Schedule for the Location and Number of Mechanical and Electrical Provisions of Residential Properties"	

The vendor undertakes that if lifts or appliances of the specified brand name or model number are not installed in the development, lifts or appliances of comparable quality will be installed.

22 裝置、裝修物料及設備 FITTINGS, FINISHES AND APPLIANCES

6. 設備說明表 Appliance Schedule

位置 Location		設備 Appliance	品牌名稱 Brand name	產品型號 Model number		5樓至12樓、15樓至23樓及25樓至26樓 5/F - 12/F, 15/F - 23/F and 25/F - 26/F												
				室內機 Indoor unit	室外機 Outdoor unit	A	B	C	D	E	F	G	H	J	K	L	M	N
(a)	客廳 / 飯廳 Living Room / Dining Room	分體式空調機 Split type air-conditioner	大金 Daikin	FTXS50KAVMN	4MXS115HV2C	-	√	-	-	-	-	-	-	-	√	-	-	-
				FTXS35KVMN	3MXS80AA	-	-	√	√	√	√	√	√	√	-	-	-	√
				FTXS35LVMN	RXS35LVMN	√	-	-	-	-	-	-	-	-	-	√	√	-
		天花暗藏式 空氣淨化器 Ceiling type air purifier	RHT	RH-130C-BM		√	√	√	√	√	√	√	√	√	√	√	√	√
		嵌入式雪櫃 Built-in fridge	西門子 Siemens	KI42LAFF0K		√	-	√	√	√	√	√	√	√	-	√	√	√
				KI86NAF31K		-	√	-	-	-	-	-	-	-	√	-	-	-
		嵌入式蒸焗爐 Built-in steam oven	Mia Cucina	GYV34S		√	√	√	√	√	√	√	√	√	√	√	√	√
(b)	睡房 / 睡房1 Bedroom / Bedroom 1	分體式空調機 Split type air-conditioner	大金 Daikin	FTXS35KVMN	4MXS115HV2C	-	√	-	-	-	-	-	-	-	√	-	-	-
				FTXS25KVMN	4MXS115HV2C	-	-	-	-	-	-	-	-	-	√	-	-	-
				FTXS25KVMN	3MXS80AA	-	-	-	√	√	√	√	√	-	-	-	-	√
				FTXS35KVMN	3MXS80AA	-	-	√	-	-	-	-	-	√	-	-	-	-
		空氣淨化器 Air purifier	B-mola	BM10		-	√	√	√	√	√	√	√	√	√	-	-	√
(c)	睡房2 Bedroom 2	分體式空調機 Split type air-conditioner	大金 Daikin	FTXS25KVMN	4MXS115HV2C	-	√	-	-	-	-	-	-	-	-	-	-	-

賣方承諾如該項目沒有安裝指明的品牌名稱或產品型號的升降機或設備，便會安裝品質相若的升降機或設備。

The vendor undertakes that if lifts or appliances of the specified brand name or model number are not installed in the development, lifts or appliances of comparable quality will be installed.

22 裝置、裝修物料及設備 FITTINGS, FINISHES AND APPLIANCES

6. 設備說明表 Appliance Schedule

位置 Location		設備 Appliance	品牌名稱 Brand Name	產品型號 Model number	5樓至12樓、15樓至23樓及25樓至26樓 5/F - 12/F, 15/F - 23/F and 25/F - 26/F													
					A	B	C	D	E	F	G	H	J	K	L	M	N	
(d)	開放式廚房 Open Kitchen	電磁爐 Induction hob	西門子 Siemens	EH375FBB1E	√	-	-	-	-	-	-	-	-	-	√	√	-	
		氣體煮食爐 Gas hob	Mia Cucina	MYB32CT	-	√	√	√	√	√	√	√	√	√	√	-	-	√
		抽油煙機 Cooker hood	Miele	DAS2620	√	√	√	√	√	√	√	√	√	√	√	√	√	√
		洗衣乾衣機 Washer dryer	西門子 Siemens	WK14D321HK	√	√	√	√	√	√	√	√	√	√	√	√	√	√
(e)	浴室 Bathroom	浴室寶 Thermo ventilator	三菱電機 Mitsubishi Electric	V-251BZ-HK	√	√	√	√	√	√	√	√	√	√	√	√	√	
(f)	露台 (5樓的單位除外) Balcony (except residential properties of 5/F)	煤氣熱水爐 Gas water heater	TGC	RBOX16L/R	√	-	-	-	-	-	-	-	-	-	√	√	-	
(g)	露台及工作平台 (5樓的單位除外) Balcony & Utility Platform (except residential properties of 5/F)		TGC	RBOX16L/R	-	-	√	-	-	-	-	-	√	-	-	-	-	
	TGC		RBOX16QL/R	-	√	-	√	√	√	√	√	√	-	√	-	-	√	
(h)	平台(只適用於5樓的單位) Flat Roof (For residential properties of 5/F only)		TGC	RBOX16L/R	√	-	√	-	-	-	-	-	√	-	√	√	-	
			TGC	RBOX16QL/R	-	√	-	√	√	√	√	√	√	-	√	-	-	√

賣方承諾如該項目沒有安裝指明的品牌名稱或產品型號的升降機或設備，便會安裝品質相若的升降機或設備。

The vendor undertakes that if lifts or appliances of the specified brand name or model number are not installed in the development, lifts or appliances of comparable quality will be installed.

22 裝置、裝修物料及設備 FITTINGS, FINISHES AND APPLIANCES

6. 設備說明表 Appliance Schedule

位置 Location		設備 Appliance	品牌名稱 Brand name	產品型號 Model number		27樓至28樓 27/F - 28/F											29樓 29/F											
				室內機 Indoor unit	室外機 Outdoor unit	A	B	C	E	F	G	J	K	L	M	N	A	B	C	E	F	G	J	K	L	M	N	
(a)	客廳 / 飯廳 Living Room / Dining Room	分體式空調機 Split type air-conditioner	大金 Daikin	FTXS50KAVMN	4MXS115HV2C	-	√	-	-	-	-	-	√	-	-	-	-	√	-	-	-	-	-	√	-	-	-	
				FTXS50LVMN	RXS50LVMN	-	-	-	-	-	-	-	-	-	-	-	-	√	-	-	-	-	-	-	-	√	√	-
				FTXS50KAVMN	3MXS80AA	-	-	-	-	-	-	-	-	-	-	-	-	-	-	-	√	√	√	-	-	-	-	√
				FTXS35LVMN	RXS35LVMN	√	-	-	-	-	-	-	-	-	√	√	-	-	-	-	-	-	-	-	-	-	-	-
				FTXS35KVMN	3MXS80AA	-	-	-	√	√	√	-	-	-	-	-	√	-	-	-	-	-	-	-	-	-	-	-
				FXAQ50AVM	RJLQ6BAV	-	-	√	-	-	-	√	-	-	-	-	-	-	-	-	-	√	-	-	-	√	-	-
		天花暗藏式 空氣淨化器 Ceiling type air purifier	RHT	RH-130C-BM		√	√	√	√	√	√	√	√	√	√	√	√	√	√	√	√	√	√	√	√	√	√	
		嵌入式雪櫃 Built-in fridge	西門子 Siemens	KI42LAFF0K		√	-	-	√	√	√	-	-	√	√	√	√	√	-	-	√	√	√	-	-	√	√	√
				KI86NAF31K		-	√	√	-	-	-	√	√	-	-	-	-	-	√	√	-	-	-	√	√	-	-	-
		嵌入式蒸焗爐 Built-in steam oven	Mia Cucina	GYV34S		√	√	√	√	√	√	√	√	√	√	√	√	√	√	√	-	√	√	√	-	√	√	√
			Miele	DGC7440		-	-	-	-	-	-	-	-	-	-	-	-	-	-	-	√	-	-	-	√	-	-	-
		空氣淨化器 Air purifier	B-mola	BM10		√	-	-	-	-	-	-	-	-	√	√	-	√	-	-	-	-	-	-	-	√	√	
(b)	睡房 / 睡房1 Bedroom / Bedroom 1	分體式空調機 Split type air-conditioner	大金 Daikin	FTXS35KVMN	4MXS115HV2C	-	√	-	-	-	-	-	√	-	-	-	-	√	-	-	-	-	-	√	-	-		
				FTXS25KVMN	4MXS115HV2C	-	-	-	-	-	-	-	√	-	-	-	-	-	-	-	-	-	-	√	-	-		
				FTXS25KVMN	3MXS80AA	-	-	-	√	√	√	-	-	-	-	√	-	-	-	√	√	√	-	-	-	-	√	
				FXAQ25AVM	RJLQ6BAV	-	-	√	-	-	-	√	-	-	-	-	-	-	-	-	√	-	-	√	-	-	-	
		空氣淨化器 Air purifier	B-mola	BM10		-	√	-	√	√	√	-	√	-	-	√	-	√	-	√	√	√	-	√	-	-	√	

賣方承諾如該項目沒有安裝指明的品牌名稱或產品型號的升降機或設備，便會安裝品質相若的升降機或設備。

The vendor undertakes that if lifts or appliances of the specified brand name or model number are not installed in the development, lifts or appliances of comparable quality will be installed.

22 裝置、裝修物料及設備 FITTINGS, FINISHES AND APPLIANCES

6. 設備說明表 Appliance Schedule

位置 Location		設備 Appliance	品牌名稱 Brand name	產品型號 Model number		27樓至28樓 27/F - 28/F												29樓 29/F											
				室內機 Indoor unit	室外機 Outdoor unit	A	B	C	E	F	G	J	K	L	M	N	A	B	C	E	F	G	J	K	L	M	N		
(c)	睡房2 Bedroom 2	分體式空調機 Split type air-conditioner	大金 Daikin	FTXS25KVMN	4MXS115HV2C	-	√	-	-	-	-	-	-	-	-	-	-	-	√	-	-	-	-	-	-	-	-		
				FXAQ32AVM	RJLQ6BAV	-	-	√	-	-	-	√		-	-	-	-	-	-	-	-	-	-	-	-	-	-	-	
(d)	主人睡房 Master Bedroom	分體式空調機 Split type air-conditioner	大金 Daikin	FXAQ32AVM	RJLQ6BAV	-	-	√	-	-	-	√	-	-	-	-	-	-	√	-	-	-	√	-	-	-	-		
		消毒衣櫃 Disinfection closet	三星 Samsung	DF60A8500CG/SH		-	-	-	-	-	-	-	-	-	-	-	-	-	√	-	-	-	√	-	-	-	-		
		空氣淨化器 Air purifier	B-mola	BM10		-	-	√	-	-	-	√		-	-	-	-	-	-	-	-	-	-	-	-	-	-		
(e)	儲物室 Store Room	分體式空調機 Split type air-conditioner	大金 Daikin	FXAQ25AVM	RJLQ6BAV	-	-	-	-	-	-	-	-	-	-	-	-	-	√	-	-	-	√	-	-	-	-		
(f)	開放式廚房 Open Kitchen	電磁爐 Induction hob	西門子 Siemens	EH375FBB1E		√	-	-	-	-	-	-	-	√	√	-	√	-	-	-	-	-	-	-	√	√	-		
		氣體煮食爐 Gas hob	Mia Cucina	MYB32CT		-	√	√	√	√	√	√	√	-	-	√	-	√	√	√	√	√	√	√	-	-	√		
		抽油煙機 Cooker hood	Miele	DAS2620		√	√	√	√	√	√	√	√	√	√	√	√	√	√	√	√	√	√	√	√	√	√		
		洗衣乾衣機 Washer dryer	西門子 Siemens	WK14D321HK		√	√	√	√	√	√	√	√	√	√	√	√	√	√	√	√	√	√	√	√	√	√		
(g)	浴室 / 主人浴室 Bathroom / Master Bathroom	浴室寶 Thermo ventilator	三菱電機 Mitsubishi Electric	V-251BZ-HK		√	√	√	√	√	√	√	√	√	√	√	√	√	√	√	√	√	√	√	√	√			
(h)	露台 Balcony	煤氣熱水爐 Gas water heater	TGC	RBOX16L/R		√	-	-	-	-	-	-	-	√	√	-	√	-	-	-	-	-	-	√	√	-			
(i)	露台及工作平台 Balcony & Utility Platform			RBOX16QL/R		-	√	√	√	√	√	√	√	-	-	√	-	√	-	√	√	√	-	√	-	-	√		
(j)	私人天台 Private Roof			TRJW222TFQL		-	-	-	-	-	-	-	-	-	-	-	-	-	-	√	-	-	-	√	-	-	-	-	

賣方承諾如該項目沒有安裝指明的品牌名稱或產品型號的升降機或設備，便會安裝品質相若的升降機或設備。

The vendor undertakes that if lifts or appliances of the specified brand name or model number are not installed in the development, lifts or appliances of comparable quality will be installed.

22 裝置、裝修物料及設備 FITTINGS, FINISHES AND APPLIANCES

7. 住宅單位機電裝置位置及數量說明表 Schedule for the Location and Number of Mechanical & Electrical Provisions of Residential Properties

位置 Location		描述 Description		5樓 5/F												
				A	B	C	D	E	F	G	H	J	K	L	M	N
(a)	大門入口 Main Entrance	門鈴按鈕 Door bell push button		1	1	1	1	1	1	1	1	1	1	1	1	1
(b)	客廳 / 飯廳 Living Room / Dining Room	門鈴 Door bell		1	1	1	1	1	1	1	1	1	1	1	1	1
		對講機 Audio door phone		1	1	1	1	1	1	1	1	1	1	1	1	1
		電視 / 電台天線插座 TV / FM outlet		1	1	2	2	2	2	2	2	2	1	1	1	1
		電話插座 Telephone outlet		1	1	1	1	1	1	1	1	1	1	1	1	1
		網路插座 Data outlet		1	1	1	1	1	1	1	1	1	1	1	1	1
			連接 Wi-Fi 6 路由器 Connect to Wi-Fi 6 router	1	1	1	1	1	1	1	1	1	1	1	1	1
		13A 單位插座 13A single socket outlet	適用於雪櫃 For fridge	1	1	1	1	1	1	1	1	1	1	1	1	1
			適用於天花暗藏式空氣淨化器及智能家居設備 For ceiling type air purifier and home automation equipment	2	2	2	2	2	2	2	2	2	2	2	2	2
		13A 雙位插座 13A twin socket outlet	一般用途 For general use	2	2	2	2	2	2	2	2	2	2	2	2	2
			連接 Wi-Fi 6 路由器 Connect to Wi-Fi 6 router	1	1	1	1	1	1	1	1	1	1	1	1	1
			適用於衣櫃 For wardrobe	1	-	-	-	-	-	-	-	-	-	1	1	-
		13A 雙位插座（附有USB插頭） 13A twin socket outlet (with USB port)	一般用途 For general use	1	1	1	1	1	1	1	1	1	1	1	1	1
		熔斷器的接線座 Fused connection unit	適用於衣櫃燈 For wardrobe light	2	1	-	-	-	-	-	-	-	1	2	2	-
			適用於蒸焗爐櫃燈 For steam oven cabinet light	-	-	-	1	1	1	1	1	-	-	-	-	-
			適用於電動窗簾 For motorised curtain	1	1	1	1	1	1	1	1	1	1	1	1	1
		雙極開關掣 Double pole switch	適用於空調機之室內機 For air-conditioning indoor unit	1	1	1	1	1	1	1	1	1	1	1	1	1

22 裝置、裝修物料及設備 FITTINGS, FINISHES AND APPLIANCES

7. 住宅單位機電裝置位置及數量說明表 Schedule for the Location and Number of Mechanical & Electrical Provisions of Residential Properties

位置 Location		描述 Description		5樓 5/F												
				A	B	C	D	E	F	G	H	J	K	L	M	N
(b)	客廳 / 飯廳 Living Room / Dining Room	雙位雙極開關掣 2-gang double pole switch	適用於浴室寶及煤氣熱水爐 For thermo ventilator and gas water heater	1	1	-	1	1	1	1	1	-	1	1	1	-
		雙極接線座 Double pole connection unit	適用於蒸焗爐 For steam oven	1	1	1	1	1	1	1	1	1	1	1	1	1
		無線充電器 Wireless charger		1	1	1	1	1	1	1	1	1	1	1	1	1
		燈掣 Lighting switch		5	5	4	5	5	5	5	5	4	5	5	5	4
(c)	開放式廚房 Open Kitchen	13A 單位插座 13A single socket outlet	適用於洗衣乾衣機及 / 或氣體煮食爐 For washer dryer and / or gas hob	2	2	2	2	2	2	2	2	2	2	2	2	2
			一般用途 For general use	2	1	1	1	1	1	1	1	1	1	2	2	1
		13A 雙位插座 13A twin socket outlet	一般用途 For general use	-	1	1	1	1	1	1	1	1	1	-	-	1
		微型斷路器配電箱 Minature circuit breaker distribution board		1	1	1	1	1	1	1	1	1	1	1	1	1
		熔斷器的接線座 Fused connection unit	適用於廚櫃燈 For kitchen cabinet light	1	1	1	1	1	1	1	1	1	1	1	1	1
			適用於抽油煙機 For cooker hood	1	1	1	1	1	1	1	1	1	1	1	1	1
		雙極開關掣 Double pole switch	適用於蒸焗爐 For steam oven	1	1	1	1	1	1	1	1	1	1	1	1	1
		煤氣接駁點 Gas connection point	適用於氣體煮食爐 For gas hob	-	1	1	1	1	1	1	1	1	1	-	-	1
		來水及去水位 Water and drain points	適用於洗衣乾衣機 For washer dryer	1	1	1	1	1	1	1	1	1	1	1	1	1

22 裝置、裝修物料及設備 FITTINGS, FINISHES AND APPLIANCES

7. 住宅單位機電裝置位置及數量說明表 Schedule for the Location and Number of Mechanical & Electrical Provisions of Residential Properties

位置 Location		描述 Description		5樓 5/F													
				A	B	C	D	E	F	G	H	J	K	L	M	N	
(d)	睡房 / 睡房 1 Bedroom / Bedroom 1	電視機 / 電台天線插座 TV/FM outlet		-	1	1	1	1	1	1	1	1	1	1	-	-	1
		電話插座 Telephone outlet		-	1	1	1	1	1	1	1	1	1	1	-	-	1
		13A 雙位插座 13A twin socket outlet		-	1	1	1	1	1	1	1	1	2	-	-	1	
			適用於衣櫃燈 For wardrobe light	-	1	1	1	1	1	1	1	1	1	-	-	1	
		13A 雙位插座（附有USB插頭） 13A twin socket outlet (with USB port)		-	1	1	1	1	1	1	1	1	2	-	-	1	
		熔斷器的接線座 Fused connection unit	適用於衣櫃燈 For wardrobe light	-	1	1	1	1	1	1	1	1	2	-	-	1	
			適用於電動窗簾 For motorised curtain	-	2	2	1	1	1	1	1	2	3	-	-	1	
		雙極開關掣 Double pole switch	適用於浴室寶 For thermo ventilator	-	-	1	-	-	-	-	-	1	-	-	-	-	
			適用於空調機之室內機 For air-conditioning indoor unit	-	1	1	1	1	1	1	1	1	2	-	-	1	
			適用於煤氣熱水爐 For gas water heater	-	-	1	-	-	-	-	-	1	-	-	-	-	
雙位雙極開關掣 2-gang double pole switch	適用於浴室寶及煤氣熱水爐 For thermo ventilator and gas water heater	-	-	-	-	-	-	-	-	-	-	-	-	1			
燈掣 Lighting switch		-	1	2	1	1	1	1	1	1	2	2	-	-	2		
(e)	睡房 2 Bedroom 2	電視 / 電台天線插座 TV / FM outlet		-	1	-	-	-	-	-	-	-	-	-	-	-	
		電話插座 Telephone outlet		-	1	-	-	-	-	-	-	-	-	-	-	-	
		13A 雙位插座 13A twin socket outlet		-	1	-	-	-	-	-	-	-	-	-	-	-	
		13A 雙位插座（附有USB插頭） 13A twin socket outlet (with USB port)		-	1	-	-	-	-	-	-	-	-	-	-	-	
		熔斷器的接線座 Fused connection unit	適用於電動窗簾 For motorised curtain	-	1	-	-	-	-	-	-	-	-	-	-	-	

22 裝置、裝修物料及設備 FITTINGS, FINISHES AND APPLIANCES

7. 住宅單位機電裝置位置及數量說明表 Schedule for the Location and Number of Mechanical & Electrical Provisions of Residential Properties

位置 Location		描述 Description		5樓 5/F												
				A	B	C	D	E	F	G	H	J	K	L	M	N
(e)	睡房 2 Bedroom 2	雙極開關掣 Double pole switch	適用於空調機之室內機 For air-conditioning indoor unit	-	1	-	-	-	-	-	-	-	-	-	-	-
		燈掣 Lighting switch		-	1	-	-	-	-	-	-	-	-	-	-	-
(f)	浴室 Bathroom	13A 單位插座 13A single socket outlet		1	1	1	1	1	1	1	1	1	1	1	1	1
		熔斷器的接線座 Fused connection unit	適用於浴室寶 For thermo ventilator	1	1	1	1	1	1	1	1	1	1	1	1	1
			適用於鏡櫃燈 For mirror cabinet light	1	1	1	1	1	1	1	1	1	1	1	1	1
		煤氣熱水爐遙控器 Gas water heater remote control		1	1	1	1	1	1	1	1	1	1	1	1	1
(g)	平台 Flat Roof	13A 雙位防水插座 13A twin weatherproof socket outlet		2	2	2	2	2	2	2	2	2	2	2	2	2
		熔斷器的接線座 Fused connection unit	適用於煤氣熱水爐 For gas water heater	1	1	1	1	1	1	1	1	1	1	1	1	1
		20A 防水雙極開關掣 20A weatherproof double pole Isolator	適用於空調機之室外機 For air-conditioning outdoor unit	1	1	1	1	1	1	1	1	1	1	1	1	1
		煤氣接駁點 Gas connection point	適用於煤氣熱水爐 For gas water heater	1	1	1	1	1	1	1	1	1	1	1	1	1

22 裝置、裝修物料及設備 FITTINGS, FINISHES AND APPLIANCES

7. 住宅單位機電裝置位置及數量說明表 Schedule for the Location and Number of Mechanical & Electrical Provisions of Residential Properties

位置 Location		描述 Description		6樓至12樓、15樓至23樓及25樓至26樓 6/F - 12/F, 15/F - 23/F and 25/F - 26/F												
				A	B	C	D	E	F	G	H	J	K	L	M	N
(a)	大門入口 Main Entrance	門鈴按鈕 Door bell push button		1	1	1	1	1	1	1	1	1	1	1	1	1
(b)	客廳 / 飯廳 Living Room / Dining Room	門鈴 Door bell		1	1	1	1	1	1	1	1	1	1	1	1	1
		對講機 Audio door phone		1	1	1	1	1	1	1	1	1	1	1	1	1
		電視 / 電台天線插座 TV / FM outlet		1	1	2	2	2	2	2	2	2	1	1	1	1
		電話插座 Telephone outlet		1	1	1	1	1	1	1	1	1	1	1	1	1
		網路插座 Data outlet		1	1	1	1	1	1	1	1	1	1	1	1	1
			連接 Wi-Fi 6 路由器 Connect to Wi-Fi 6 router	1	1	1	1	1	1	1	1	1	1	1	1	1
		13A 單位插座 13A single socket outlet	適用於雪櫃 For fridge	1	1	1	1	1	1	1	1	1	1	1	1	1
			適用於空氣淨化器及智能家居設備 For air purifier and home automation equipment	2	2	2	2	2	2	2	2	2	2	2	2	2
		13A 雙位插座 13A twin socket outlet	一般用途 For general use	2	2	2	2	2	2	2	2	2	2	2	2	2
			連接 Wi-Fi 6 路由器 Connect to Wi-Fi 6 router	1	1	1	1	1	1	1	1	1	1	1	1	1
			適用於衣櫃 For wardrobe	1	-	-	-	-	-	-	-	-	-	1	1	-
		13A 雙位插座（附有USB插頭） 13A twin socket outlet (with USB port)	一般用途 For general use	1	1	1	1	1	1	1	1	1	1	1	1	1
		熔斷器的接線座 Fused connection unit	適用於衣櫃燈 For wardrobe light	2	1	-	-	-	-	-	-	-	1	2	2	-
			適用於蒸焗爐櫃燈 For steam oven cabinet light	-	-	-	1	1	1	1	1	-	-	-	-	-
			適用於電動窗簾 For motorised curtain	1	1	1	1	1	1	1	1	1	1	1	1	1
		雙極開關掣 Double pole switch	適用於空調機之室內機 For air-conditioning indoor unit	1	1	1	1	1	1	1	1	1	1	1	1	1

22 裝置、裝修物料及設備 FITTINGS, FINISHES AND APPLIANCES

7. 住宅單位機電裝置位置及數量說明表 Schedule for the Location and Number of Mechanical & Electrical Provisions of Residential Properties

位置 Location		描述 Description		6樓至12樓、15樓至23樓及25樓至26樓 6/F - 12/F, 15/F - 23/F and 25/F - 26/F													
				A	B	C	D	E	F	G	H	J	K	L	M	N	
(b)	客廳 / 飯廳 Living Room / Dining Room	雙位雙極開關掣 2-gang double pole switch	適用於浴室寶及煤氣熱水爐 For thermo ventilator and gas water heater	1	1	-	1	1	1	1	1	-	1	1	1	-	
		雙極接線座 Double pole connection unit	適用於蒸焗爐 For steam oven	1	1	1	1	1	1	1	1	1	1	1	1	1	
		無線充電器 Wireless charger		1	1	1	1	1	1	1	1	1	1	1	1	1	
		燈掣 Lighting switch		5	5	4	5	5	5	5	5	4	5	5	5	4	
(c)	開放式廚房 Open Kitchen	13A 單位插座 13A single socket outlet	適用於洗衣乾衣機及 / 或氣體煮食爐 For washer dryer and / or gas hob	2	2	2	2	2	2	2	2	2	2	2	2	2	
			一般用途 For general use	2	1	1	1	1	1	1	1	1	1	2	2	1	
		13A 雙位插座 13A twin socket outlet	一般用途 For general use	-	1	1	1	1	1	1	1	1	1	-	-	1	
		微型斷路器配電箱 Minature circuit breaker distribution board		1	1	1	1	1	1	1	1	1	1	1	1	1	
		熔斷器的接線座 Fused connection unit	適用於廚櫃燈 For kitchen cabinet light	1	1	1	1	1	1	1	1	1	1	1	1	1	
			適用於抽油煙機 For cooker hood	1	1	1	1	1	1	1	1	1	1	1	1	1	
		雙極開關掣 Double pole switch	適用於蒸焗爐 For steam oven	1	1	1	1	1	1	1	1	1	1	1	1	1	
		煤氣接駁點 Gas connection point	適用於氣體煮食爐 For gas hob	-	1	1	1	1	1	1	1	1	1	-	-	1	
		來水及去水位 Water and drain points	適用於洗衣乾衣機 For washer dryer	1	1	1	1	1	1	1	1	1	1	1	1	1	

22 裝置、裝修物料及設備 FITTINGS, FINISHES AND APPLIANCES

7. 住宅單位機電裝置位置及數量說明表 Schedule for the Location and Number of Mechanical & Electrical Provisions of Residential Properties

位置 Location		描述 Description		6樓至12樓、15樓至23樓及25樓至26樓 6/F - 12/F, 15/F - 23/F and 25/F - 26/F													
				A	B	C	D	E	F	G	H	J	K	L	M	N	
(d)	睡房 / 睡房 1 Bedroom / Bedroom 1	電視機 / 電台天線插座 TV/FM outlet		-	1	1	1	1	1	1	1	1	1	1	-	-	1
		電話插座 Telephone outlet		-	1	1	1	1	1	1	1	1	1	1	-	-	1
		13A 雙位插座 13A twin socket outlet		-	1	1	1	1	1	1	1	1	1	2	-	-	1
			適用於衣櫃 For wardrobe	-	1	1	1	1	1	1	1	1	1	1	-	-	1
		13A 雙位插座（附有USB插頭） 13A twin socket outlet (with USB port)		-	1	1	1	1	1	1	1	1	1	2	-	-	1
		熔斷器的接線座 Fused connection unit	適用於衣櫃燈 For wardrobe light	-	1	1	1	1	1	1	1	1	1	2	-	-	1
			適用於電動窗簾 For motorised curtain	-	2	2	1	1	1	1	1	1	2	3	-	-	1
			適用於浴室寶 For thermo ventilator	-	-	1	-	-	-	-	-	1	-	-	-	-	-
		雙極開關掣 Double pole switch	適用於空調機之室內機 For air-conditioner indoor unit	-	1	1	1	1	1	1	1	1	1	2	-	-	1
			適用於煤氣熱水爐 For gas water heater	-	-	1	-	-	-	-	-	1	-	-	-	-	-
(e)	睡房 2 Bedroom 2	雙位雙極開關掣 2-gang double pole switch	適用於浴室寶及煤氣熱水爐 For thermo ventilator and gas water heater	-	-	-	-	-	-	-	-	-	-	-	-	1	
		燈掣 Lighting switch		-	1	2	1	1	1	1	1	1	2	2	-	-	2
		電視 / 電台天線插座 TV / FM outlet		-	1	-	-	-	-	-	-	-	-	-	-	-	-
		電話插座 Telephone outlet		-	1	-	-	-	-	-	-	-	-	-	-	-	-
		13A 雙位插座 13A twin socket outlet		-	1	-	-	-	-	-	-	-	-	-	-	-	-
		13A 雙位插座（附有USB插頭） 13A twin socket outlet (with USB port)		-	1	-	-	-	-	-	-	-	-	-	-	-	
		熔斷器的接線座 Fused connection unit	適用於電動窗簾 For motorised curtain	-	1	-	-	-	-	-	-	-	-	-	-	-	-

22 裝置、裝修物料及設備 FITTINGS, FINISHES AND APPLIANCES

7. 住宅單位機電裝置位置及數量說明表 Schedule for the Location and Number of Mechanical & Electrical Provisions of Residential Properties

位置 Location		描述 Description		6樓至12樓、15樓至23樓及25樓至26樓 6/F - 12/F, 15/F - 23/F and 25/F - 26/F												
				A	B	C	D	E	F	G	H	J	K	L	M	N
(e)	睡房 2 Bedroom 2	雙極開關掣 Double pole switch	適用於空調機之室內機 For air-conditioning indoor unit	-	1	-	-	-	-	-	-	-	-	-	-	-
		燈掣 Lighting switch		-	1	-	-	-	-	-	-	-	-	-	-	-
(f)	浴室 Bathroom	13A 單位插座 13A single socket outlet		1	1	1	1	1	1	1	1	1	1	1	1	1
		熔斷器的接線座 Fused connection unit	適用於浴室寶 For thermo ventilator	1	1	1	1	1	1	1	1	1	1	1	1	1
			適用於鏡櫃燈 For mirror cabinet light	1	1	1	1	1	1	1	1	1	1	1	1	1
		煤氣熱水爐遙控器 Gas water heater remote control		1	1	1	1	1	1	1	1	1	1	1	1	1
(g)	露台 / 露台及工作平台 Balcony / Balcony & Utility Platform	熔斷器的接線座 Fused connection unit	適用於煤氣熱水爐 For gas water heater	1	1	1	1	1	1	1	1	1	1	1	1	1
		20A 防水雙極開關掣 20A Weatherproof Double pole Isolator	適用於空調機之室外機 For air-conditioning outdoor unit	1	1	1	1	1	1	1	1	1	1	1	1	1
		煤氣接駁點 Gas connection point	適用於煤氣熱水爐 For gas water heater	1	1	1	1	1	1	1	1	1	1	1	1	1

22 裝置、裝修物料及設備 FITTINGS, FINISHES AND APPLIANCES

7. 住宅單位機電裝置位置及數量說明表 Schedule for the Location and Number of Mechanical & Electrical Provisions of Residential Properties

位置 Location		描述 Description		27樓至28樓 27/F - 28/F										
				A	B	C	E	F	G	J	K	L	M	N
(a)	大門入口 Main Entrance	門鈴按鈕 Door bell push button		1	1	1	1	1	1	1	1	1	1	1
(b)	客廳 / 飯廳 Living Room / Dining Room	門鈴 Door bell		1	1	1	1	1	1	1	1	1	1	1
		對講機 Audio door phone		1	1	1	1	1	1	1	1	1	1	1
		電視 / 電台天線插座 TV / FM outlet		1	1	1	2	2	2	1	1	1	1	1
		電話插座 Telephone outlet		1	1	1	1	1	1	1	1	1	1	1
		網路插座 Data outlet		1	1	1	1	1	1	1	1	1	1	1
			連接 Wi-Fi 6 路由器 Connect to Wi-Fi 6 router	1	1	1	1	1	1	1	1	1	1	1
		13A 單位插座 13A single socket outlet	適用於雪櫃 For fridge	1	1	1	1	1	1	1	1	1	1	1
			適用於空氣淨化器及智能家居設備 For air purifier and home automation equipment	2	2	2	2	2	2	2	2	2	2	2
		13A 雙位插座 13A twin socket outlet	一般用途 For general use	2	2	2	2	2	2	2	2	2	2	2
			連接 Wi-Fi 6 路由器 Connect to Wi-Fi 6 router	1	1	1	1	1	1	1	1	1	1	1
			適用於衣櫃 For wardrobe	1	-	-	-	-	-	-	-	1	1	-
		13A 雙位插座（附有USB插頭） 13A twin socket outlet (with USB port)	一般用途 For general use	1	1	1	1	1	1	1	1	1	1	1
		熔斷器的接線座 Fused connection unit	適用於衣櫃燈 For wardrobe light	2	1	-	-	-	-	-	1	2	2	-
			適用於蒸焗爐燈 For steam oven cabinet light	-	-	-	1	1	1	-	-	-	-	-
			適用於電動窗簾 For motorised curtain	1	1	1	1	1	1	1	1	1	1	1
		雙極開關掣 Double pole switch	適用於空調機之室內機 For air-conditioning indoor unit	1	1	1	1	1	1	1	1	1	1	1

22 裝置、裝修物料及設備 FITTINGS, FINISHES AND APPLIANCES

7. 住宅單位機電裝置位置及數量說明表 Schedule for the Location and Number of Mechanical & Electrical Provisions of Residential Properties

位置 Location		描述 Description		27樓至28樓 27/F - 28/F										
				A	B	C	E	F	G	J	K	L	M	N
(b)	客廳 / 飯廳 Living Room / Dining Room	雙位雙極開關掣 2-gang double pole switch	適用於浴室寶及煤氣熱水爐 For thermo ventilator and gas water heater	1	1	1	1	1	1	1	1	1	1	-
		雙極接線座 Double pole connection unit	適用於蒸焗爐 For steam oven	1	1	1	1	1	1	1	1	1	1	1
		無線充電器 Wireless charger		1	1	1	1	1	1	1	1	1	1	1
		燈掣 Lighting switch		5	5	5	5	5	5	5	5	5	5	4
(c)	開放式廚房 Open Kitchen	13A 單位插座 13A single socket outlet	適用於洗衣乾衣機及 / 或氣體煮食爐 For washer dryer and / or gas hob	2	2	2	2	2	2	2	2	2	2	2
			一般用途 For general use	2	1	1	1	1	1	1	1	2	2	1
		13A 雙位插座 13A twin socket outlet	一般用途 For general use	-	1	1	1	1	1	1	1	-	-	1
		微型斷路器配電箱 Minature circuit breaker distribution board		1	1	1	1	1	1	1	1	1	1	1
		熔斷器的接線座 Fused connection unit	適用於廚櫃燈 For kitchen cabinet light	1	1	1	1	1	1	1	1	1	1	1
			適用於抽油煙機 For cooker hood	1	1	1	1	1	1	1	1	1	1	1
		雙極開關掣 Double pole switch	適用於蒸焗爐 For steam oven	1	1	1	1	1	1	1	1	1	1	1
		煤氣接駁點 Gas connection point	適用於氣體煮食爐 For gas hob	-	1	1	1	1	1	1	1	-	-	1
		來水及去水位 Water and drain points	適用於洗衣乾衣機 For washer dryer	1	1	1	1	1	1	1	1	1	1	1

22 裝置、裝修物料及設備 FITTINGS, FINISHES AND APPLIANCES

7. 住宅單位機電裝置位置及數量說明表 Schedule for the Location and Number of Mechanical & Electrical Provisions of Residential Properties

位置 Location		描述 Description	27樓至28樓 27/F - 28/F										
			A	B	C	E	F	G	J	K	L	M	N
(d)	睡房 / 睡房 1 Bedroom / Bedroom 1	電視機 / 電台天線插座 TV/FM outlet	-	1	1	1	1	1	1	1	-	-	1
		電話插座 Telephone outlet	-	1	1	1	1	1	1	1	-	-	1
		13A 雙位插座 13A twin socket outlet	-	1	1	1	1	1	1	2	-	-	1
		適用於衣櫃 For wardrobe	-	1	-	1	1	1	-	1	-	-	1
		13A 雙位插座（附有USB插頭） 13A twin socket outlet (with USB port)	-	1	1	1	1	1	1	2	-	-	1
		熔斷器的接線座 Fused connection unit	-	1	-	1	1	1	-	2	-	-	1
		適用於衣櫃燈 For wardrobe light	-	1	-	1	1	1	-	2	-	-	1
		適用於電動窗簾 For motorised curtain	-	2	1	1	1	1	1	3	-	-	1
(e)	睡房 2 Bedroom 2	雙極開關掣 Double pole switch	-	1	1	1	1	1	1	2	-	-	1
		適用於空調機之室內機 For air-conditioner indoor unit	-	1	1	1	1	1	1	2	-	-	1
		雙位雙極開關掣 2-gang double pole switch	-	-	-	-	-	-	-	-	-	-	1
		適用於浴室寶及煤氣熱水爐 For thermo ventilator and gas water heater	-	-	-	-	-	-	-	-	-	-	1
		燈掣 Lighting switch	-	1	1	1	1	1	1	2	-	-	2
(e)	睡房 2 Bedroom 2	電視 / 電台天線插座 TV / FM outlet	-	1	1	-	-	-	1	-	-	-	-
		電話插座 Telephone outlet	-	1	1	-	-	-	1	-	-	-	-
		13A 雙位插座 13A twin socket outlet	-	1	1	-	-	-	1	-	-	-	-
		13A 雙位插座（附有USB插頭） 13A twin socket outlet (with USB port)	-	1	1	-	-	-	1	-	-	-	-
		熔斷器的接線座 Fused connection unit	-	1	3	-	-	-	3	-	-	-	-
		適用於電動窗簾 For motorised curtain	-	1	3	-	-	-	3	-	-	-	-

22 裝置、裝修物料及設備 FITTINGS, FINISHES AND APPLIANCES

7. 住宅單位機電裝置位置及數量說明表 Schedule for the Location and Number of Mechanical & Electrical Provisions of Residential Properties

位置 Location		描述 Description		27樓至28樓 27/F - 28/F										
				A	B	C	E	F	G	J	K	L	M	N
(e)	睡房 2 Bedroom 2	雙極開關掣 Double pole switch	適用於空調機之室內機 For air-conditioning indoor unit	-	1	1	-	-	-	1	-	-	-	-
		燈掣 Lighting switch		-	1	1	-	-	-	1	-	-	-	-
(f)	主人睡房 Master Bedroom	電視 / 電台天線插座 TV / FM outlet		-	-	1	-	-	-	1	-	-	-	-
		電話插座 Telephone outlet		-	-	1	-	-	-	1	-	-	-	-
		13A 雙位插座 13A twin socket outlet		-	-	1	-	-	-	1	-	-	-	-
			適用於消毒衣櫃 For disinfection closet	-	-	1	-	-	-	1	-	-	-	-
		13A 雙位插座（附有USB插頭） 13A twin socket outlet (with USB port)		-	-	1	-	-	-	1	-	-	-	-
		熔斷器的接線座 Fused connection unit	適用於衣櫃燈 For wardrobe light	-	-	1	-	-	-	1	-	-	-	-
			適用於電動窗簾 For motorised curtain	-	-	1	-	-	-	1	-	-	-	-
		雙極開關掣 Double pole switch	適用於空調機之室內機 For air-conditioning indoor unit	-	-	1	-	-	-	1	-	-	-	-
		雙位雙極開關掣 2-gang double pole switch	適用於浴室寶及煤氣熱水爐 For thermo ventilator and gas water heater	-	-	1	-	-	-	1	-	-	-	-
(g)	浴室 Bathroom	燈掣 Lighting switch		-	-	2	-	-	-	2	-	-	-	-
		13A 單位插座 13A single socket outlet		1	1	1	1	1	1	1	1	1	1	1
		熔斷器的接線座 Fused connection unit	適用於浴室寶 For thermo ventilator	1	1	1	1	1	1	1	1	1	1	1
			適用於鏡櫃燈 For mirror cabinet light	1	1	1	1	1	1	1	1	1	1	1
(g)	浴室 Bathroom	煤氣熱水爐遙控器 Gas water heater remote control		1	1	1	1	1	1	1	1	1	1	1
				1	1	1	1	1	1	1	1	1	1	1

22 裝置、裝修物料及設備 FITTINGS, FINISHES AND APPLIANCES

7. 住宅單位機電裝置位置及數量說明表 Schedule for the Location and Number of Mechanical & Electrical Provisions of Residential Properties

位置 Location		描述 Description		27樓至28樓 27/F - 28/F										
				A	B	C	E	F	G	J	K	L	M	N
(h)	主人浴室 Master Bathroom	13A 單位插座 13A single socket outlet		-	-	1	-	-	-	1	-	-	-	-
		熔斷器的接線座 Fused connection unit	適用於浴室寶 For thermo ventilator	-	-	1	-	-	-	1	-	-	-	-
			適用於鏡櫃燈 For mirror cabinet light	-	-	1	-	-	-	1	-	-	-	-
		煤氣熱水爐遙控器 Gas water heater remote control		-	-	1	-	-	-	1	-	-	-	-
(i)	露台 / 露台及工作平台 Balcony / Balcony & Utility Platform	熔斷器的接線座 Fused connection unit	適用於煤氣熱水爐 For gas water heater	1	1	1	1	1	1	1	1	1	1	1
		20A 防水雙極開關掣 20A Weatherproof Double pole Isolator	適用於空調機之室外機 For air-conditioning outdoor unit	1	1	1	1	1	1	1	1	1	1	1
		煤氣接駁點 Gas connection point	適用於煤氣熱水爐 For gas water heater	1	1	1	1	1	1	1	1	1	1	1

22 裝置、裝修物料及設備 FITTINGS, FINISHES AND APPLIANCES

7. 住宅單位機電裝置位置及數量說明表 Schedule for the Location and Number of Mechanical & Electrical Provisions of Residential Properties

位置 Location		描述 Description		29樓 29/F										
				A	B	C	E	F	G	J	K	L	M	N
(a)	大門入口 Main Entrance	門鈴按鈕 Door bell push button		1	1	1	1	1	1	1	1	1	1	1
(b)	客廳 / 飯廳 Living Room / Dining Room	門鈴 Door bell		1	1	1	1	1	1	1	1	1	1	1
		對講機 Audio door phone		1	1	1	1	1	1	1	1	1	1	1
		電視 / 電台天線插座 TV / FM outlet		1	1	1	2	2	2	1	1	1	1	1
		電話插座 Telephone outlet		1	1	1	1	1	1	1	1	1	1	1
		網路插座 Data outlet		1	1	1	1	1	1	1	1	1	1	1
			連接 Wi-Fi 6 路由器 Connect to Wi-Fi 6 router	1	1	1	1	1	1	1	1	1	1	1
		13A 單位插座 13A single socket outlet	適用於雪櫃 For fridge	1	1	1	1	1	1	1	1	1	1	1
			適用於空氣淨化器及智能家居設備 For air purifier and home automation equipment	2	2	2	2	2	2	2	2	2	2	2
		13A 雙位插座 13A twin socket outlet	一般用途 For general use	2	2	2	2	2	2	2	2	2	2	2
			連接 Wi-Fi 6 路由器 Connect to Wi-Fi 6 router	1	1	1	1	1	1	1	1	1	1	1
			適用於衣櫃 For Wardrobe	1	-	-	-	-	-	-	-	1	1	-
		13A 雙位插座（附有USB插頭） 13A twin socket outlet (with USB port)	一般用途 For general use	1	1	1	1	1	1	1	1	1	1	1
		熔斷器的接線座 Fused connection unit	適用於衣櫃燈 For Wardrobe light	2	1	-	-	-	-	-	1	2	2	-
			適用於蒸焗爐櫃燈 For steam oven cabinet light	-	-	-	1	1	1	-	-	-	-	-
			適用於電動窗簾 For motorised curtain	1	1	1	1	1	1	1	1	1	1	1
		雙極開關掣 Double pole switch	適用於空調機之室內機 For air-conditioning indoor unit	1	1	1	1	1	1	1	1	1	1	1
		雙位雙極開關掣 2-gang double pole switch	適用於浴室寶及煤氣熱水爐 For thermo ventilator and gas water heater	1	1	1	1	1	1	1	1	1	1	-

22 裝置、裝修物料及設備 FITTINGS, FINISHES AND APPLIANCES

7. 住宅單位機電裝置位置及數量說明表 Schedule for the Location and Number of Mechanical & Electrical Provisions of Residential Properties

位置 Location		描述 Description		29樓 29/F										
				A	B	C	E	F	G	J	K	L	M	N
(b)	客廳 / 飯廳 Living Room / Dining Room	雙極接線座 Double pole connection unit	適用於蒸焗爐 For steam oven	1	1	1	1	1	1	1	1	1	1	1
		無線充電器 Wireless charger		1	1	1	1	1	1	1	1	1	1	1
		燈掣 Lighting switch		5	5	5	5	5	5	5	5	5	5	4
(c)	開放式廚房 Open Kitchen	13A 單位插座 13A single socket outlet	適用於洗衣乾衣機及氣體煮食爐 For washer dryer and gas hob	2	2	2	2	2	2	2	2	2	2	2
			一般用途 For general use	2	1	1	1	1	1	1	1	2	2	1
		13A 雙位插座 13A twin socket outlet	一般用途 For general use	-	1	1	1	1	1	1	1	-	-	1
		微型斷路器配電箱 Minature circuit breaker distribution board		1	1	1	1	1	1	1	1	1	1	1
		熔斷器的接線座 Fused connection unit	適用於廚櫃燈 For kitchen cabinet light	1	1	1	1	1	1	1	1	1	1	1
			適用於抽油煙機 For cooker hood	1	1	1	1	1	1	1	1	1	1	1
		雙極開關掣 Double pole switch	適用於蒸焗爐 For steam oven	1	1	1	1	1	1	1	1	1	1	1
		煤氣接駁點 Gas connection point	適用於氣體煮食爐 For gas hob	-	1	1	1	1	1	1	1	-	-	1
		來水及去水位 Water and drain points	適用於洗衣乾衣機 For washer dryer	1	1	1	1	1	1	1	1	1	1	1
		電視機/電台天線插座 TV/FM outlet		-	1	1	1	1	1	1	1	-	-	1
(d)	睡房 / 睡房 1 Bedroom / Bedroom 1	電話插座 Telephone outlet		-	1	1	1	1	1	1	1	-	-	1

22 裝置、裝修物料及設備 FITTINGS, FINISHES AND APPLIANCES

7. 住宅單位機電裝置位置及數量說明表 Schedule for the Location and Number of Mechanical & Electrical Provisions of Residential Properties

位置 Location		描述 Description		29樓 29/F										
				A	B	C	E	F	G	J	K	L	M	N
(d)	睡房 / 睡房 1 Bedroom / Bedroom 1	13A 雙位插座 13A twin socket outlet		-	1	1	1	1	1	1	2	-	-	1
			適用於衣櫃 For Wardrobe	-	1	-	1	1	1	-	1	-	-	1
		13A 雙位插座（附有USB插頭） 13A twin socket outlet (with USB port)		-	1	1	1	1	1	1	2	-	-	1
		熔斷器的接線座 Fused connection unit	適用於廚櫃燈 For kitchen cabinet light	-	1	-	1	1	1	-	2	-	-	1
			適用於電動窗簾 For motorised curtain	-	2	1	1	1	1	-	3	-	-	1
		雙極開關掣 Double pole switch	適用於空調機之室內機 For air-conditioning indoor unit	-	1	1	1	1	1	1	2	-	-	1
		雙位雙極開關掣 2-gang double pole switch	適用於浴室寶及煤氣熱水爐 For thermo ventilator and gas water heater	-	-	-	-	-	-	-	-	-	-	1
(e)	睡房 2 Bedroom 2	燈掣 Lighting switch		-	1	1	1	1	1	1	2	-	-	2
		電視 / 電台天線插座 TV / FM outlet		-	1	-	-	-	-	-	-	-	-	-
		電話插座 Telephone outlet		-	1	-	-	-	-	-	-	-	-	-
		13A 雙位插座 13A twin socket outlet		-	1	-	-	-	-	-	-	-	-	-
		13A 雙位插座（附有USB插頭） 13A twin socket outlet (with USB port)		-	1	-	-	-	-	-	-	-	-	-
		熔斷器的接線座 Fused connection unit	適用於電動窗簾 For motorised curtain	-	1	-	-	-	-	-	-	-	-	-
		雙極開關掣 Double pole switch	適用於空調機之室內機 For air-conditioning indoor unit	-	1	-	-	-	-	-	-	-	-	-
		燈掣 Lighting switch		-	1	-	-	-	-	-	-	-	-	-

22 裝置、裝修物料及設備 FITTINGS, FINISHES AND APPLIANCES

7. 住宅單位機電裝置位置及數量說明表 Schedule for the Location and Number of Mechanical & Electrical Provisions of Residential Properties

位置 Location		描述 Description		29樓 29/F										
				A	B	C	E	F	G	J	K	L	M	N
(f)	主人睡房 Master Bedroom	電視 / 電台天線插座 TV / FM outlet		-	-	1	-	-	-	1	-	-	-	-
		電話插座 Telephone outlet		-	-	1	-	-	-	1	-	-	-	-
		13A 單位插座 13A single socket outlet	一般用途 For general use	-	-	1	-	-	-	1	-	-	-	-
		13A 雙位插座 13A twin socket outlet		-	-	1	-	-	-	1	-	-	-	-
			適用於消毒衣櫃 For disinfection closet	-	-	1	-	-	-	1	-	-	-	-
		13A 雙位插座（附有USB插頭） 13A twin socket outlet (with USB port)		-	-	1	-	-	-	1	-	-	-	-
		熔斷器的接線座 Fused connection unit	適用於衣櫃燈 For wardrobe light	-	-	1	-	-	-	1	-	-	-	-
			適用於電動窗簾 For motorised curtain	-	-	1	-	-	-	1	-	-	-	-
		雙極開關掣 Double pole switch	適用於空調機之室內機 For air-conditioning indoor unit	-	-	1	-	-	-	1	-	-	-	-
		雙位雙極開關掣 2-gang double pole switch	適用於浴室寶及煤氣熱水爐 For thermo ventilator and gas water heater	-	-	1	-	-	-	1	-	-	-	-
(g)	浴室 Bathroom	燈掣 Lighting switch		-	-	2	-	-	-	2	-	-	-	-
		13A 單位插座 13A single socket outlet		1	1	1	1	1	1	1	1	1	1	1
			適用於浴室寶 For thermo ventilator	1	1	1	1	1	1	1	1	1	1	1
		煤氣熱水爐遙控器 Gas water heater remote control		1	1	1	1	1	1	1	1	1	1	1

22 裝置、裝修物料及設備 FITTINGS, FINISHES AND APPLIANCES

7. 住宅單位機電裝置位置及數量說明表 Schedule for the Location and Number of Mechanical & Electrical Provisions of Residential Properties

位置 Location		描述 Description		29樓 29/F										
				A	B	C	E	F	G	J	K	L	M	N
(h)	主人浴室 Master Bathroom	13A 單位插座 13A single socket outlet		-	-	1	-	-	-	1	-	-	-	-
		熔斷器的接線座 Fused connection unit	適用於浴室寶 For thermo ventilator	-	-	1	-	-	-	1	-	-	-	-
			適用於鏡櫃燈 For mirror cabinet light	-	-	1	-	-	-	1	-	-	-	-
		煤氣熱水爐遙控器 Gas water heater remote control		-	-	1	-	-	-	1	-	-	-	-
(i)	儲物室 Store Room	13A 單位插座（附有USB插頭） 13A single socket outlet (with USB port)		-	-	1	-	-	-	1	-	-	-	-
		燈掣 Lighting switch		-	-	1	-	-	-	1	-	-	-	-
		雙極開關掣 Double pole switch	適用於空調機之室內機 For air-conditioning indoor unit	-	-	1	-	-	-	1	-	-	-	-
(j)	平台 Flat Roof	燈掣 Lighting Switch		-	-	1	-	-	-	1	-	-	-	-
(k)	私人天台 Private Roof	13A 雙位防水插座 13A twin weatherproof socket outlet		2	2	2	-	2	2	2	2	2	2	2
		燈掣 Lighting switch		1	1	1	-	1	1	1	1	1	1	1
		煤氣接駁點 Gas connection point	適用於煤氣熱水爐 For gas water heater	-	-	1	-	-	-	1	-	-	-	-
		熔斷器的接線座 Fused connection unit	適用於煤氣熱水爐 For gas water heater	-	-	1	-	-	-	1	-	-	-	-
(l)	露台 / 露台及工作平台 Balcony / Balcony & Utility Platform	熔斷器的接線座 Fused connection unit	適用於煤氣熱水爐 For gas water heater	1	1	-	1	1	1	-	1	1	1	1
		20A 防水雙極開關掣 20A Weatherproof Double pole Isolator	適用於空調機之室外機 For air-conditioning outdoor unit	1	1	1	1	1	1	1	1	1	1	1
		煤氣接駁點 Gas connection point	適用於煤氣熱水爐 For gas water heater	1	1	-	1	1	1	-	1	1	1	1

23 服務協議 SERVICE AGREEMENTS

1. 食水及沖廁水由水務署供應。
2. 電力由中華電力有限公司供應。
3. 煤氣由香港中華煤氣有限公司供應。

1. Potable and flushing water is supplied by Water Supplies Department.
2. Electricity is supplied by CLP Power Hong Kong Limited.
3. Towngas is supplied by The Hong Kong and China Gas Company Limited.

24 地稅 GOVERNMENT RENT

賣方(擁有人)有法律責任繳付住宅物業的地稅直至住宅物業買賣完成日(包括該日)為止。

The vendor (the owner) is liable for the Government rent of a residential property up to and including the date of completion of the sale and purchase of that residential property.

25 買方的雜項付款 MISCELLANEOUS PAYMENTS BY PURCHASER

1. 在向買方交付住宅物業在空置情況下的管有權時，買方須向賣方(擁有人)補還水、電力及氣體的按金。
2. 在交付時，買方不須向賣方(擁有人)支付清理廢料的費用。
3. 水、電力及氣體的按金及清理廢料的費用的款額於售樓說明書印製日尚未決定。

備註：買方須向管理人而不須向賣方(擁有人)繳付水、電力及氣體的按金及清理廢料的費用。

1. On the delivery of the vacant possession of the residential property to the purchaser, the purchaser is liable to reimburse the vendor (the owner) for the deposits for water, electricity and gas.
2. On that delivery, the purchaser is not liable to pay to the vendor (the owner) a debris removal fee.
3. The amount of deposits for water, electricity and gas and debris removal fee is yet to be ascertained at the date on which the sales brochure is printed.

Note : The purchaser should pay to the manager instead of the vendor (the owner) the deposits for water, electricity and gas and the debris removal.

26 欠妥之處的保養責任期 DEFECT LIABILITY WARRANTY PERIOD

按買賣合約的規定，凡售出物業或於買賣合約列出裝設於物業內的裝置、裝修物料或設備有欠妥之處，而該欠妥之處並非由買方行為或疏忽造成，則賣方在接獲買方在買賣成交日期後的6個月內送達的書面通知後，須於合理地切實可行的範圍內，盡快自費作出補救。

As provided in the agreement for sale and purchase, the vendor shall, at its own cost and as soon as reasonably practicable after receipt of a written notice served by the purchaser within 6 months after the date of completion of the sale and purchase, remedy any defects to the property sold, or the fittings, finishes or appliances incorporated into the property as set out in the agreement for sale and purchase, caused otherwise than by the act or neglect of the purchaser.

27 斜坡維修 MAINTENANCE OF SLOPES

不適用。

Not applicable.

28 修訂 MODIFICATION

沒有向政府申請中而未獲批准的批地文件的修訂。

There is no on-going application to the Government for modification of the land grant which is not yet granted.

29 申請建築物總樓面面積寬免的資料

INFORMATION IN APPLICATION FOR CONCESSION ON GROSS FLOOR AREA OF BUILDING

獲寬免總樓面面積的設施分項

於印製售樓說明書前呈交予並已獲建築事務監督批准的一般建築圖則上有關總樓面面積寬免的分項的最新資料，請見下表。如印製售樓說明書時尚未呈交最終修訂圖則予建築事務監督，則有(＃)號的資料可以由認可人士提供的資料作為基礎。直至最終修訂圖則於發出佔用許可證前呈交予並獲建築事務監督批准前，以下分項資料仍可能有所修改。

根據《建築物(規劃)規例》第23(3)(b)條不計算的總樓面面積		面積(平方米)
1.(#)	停車場及上落客貨地方(公共交通總站除外)	不適用
2.	機房及相類設施	
2.1(#)	所佔面積受相關《認可人士、註冊結構工程師及註冊岩土工程師作業備考》或規例限制的強制性設施或必要機房，例如升降機機房、電訊及廣播設備室、垃圾及物料回收房等	153.341
2.2(#)	所佔面積不受任何《認可人士、註冊結構工程師及註冊岩土工程師作業備考》或規例限制的強制性設施或必要機房，例如僅供消防裝置及設備佔用的房間、電錶房、電力變壓房、食水及鹹水缸等	574.813
2.3(#)	非強制性或非必要機房，例如空調機房、風櫃房等	不適用
根據聯合作業備考第1及第2號提供的環保設施		面積(平方米)
3.(#)	露台	293.097
4.	加闊的公用走廊及升降機大堂	不適用
5.	公用空中花園	不適用
6.	隔聲簷	不適用
7.	翼牆、捕風器及風斗	不適用
8.(#)	非結構預製外牆	不適用
9.(#)	工作平台	168.000
10.	隔音屏障	不適用

適意設施		面積(平方米)
11.(#)	供保安人員和管理處員工使用的櫃檯、辦公室、儲物室、警衛室和廁所、業主立案法團辦公室	不適用
12.	住宅康樂設施，包括僅供康樂設施使用的中空、機房、游泳池的濾水器機房、有蓋人行道等	316.974
13.(#)	有上蓋的園景區及遊樂場	383.492
14.	橫向屏障 / 有蓋人行道、花棚	不適用
15.(#)	擴大升降機井道	83.602
16.	煙囪管道	不適用
17.	其他非強制性或非必要機房，例如鍋爐房、衛星電視共用天線房	不適用
18.(#)	強制性設施或必要機房所需的管槽、氣槽	176.948
19.	非強制性設施或非必要機房所需的管槽、氣槽	4.933
20.	環保系統及設施所需的機房、管槽及氣槽	不適用
21.	複式住宅單位及洋房的中空	不適用
22.	伸出物，如空調機箱及伸出外牆超過750毫米的平台	不適用
其他項目		面積(平方米)
23.(#)	庇護層，包括庇護層兼空中花園	不適用
24.(#)	其他伸出物	不適用
25.	公共交通總站	不適用
26.(#)	共用構築物及樓梯	不適用
27.(#)	僅供獲接納不計入總樓面面積的樓層使用的樓梯、升降機槽及垂直管道的水平面積	208.252
28.(#)	公眾通道	不適用
29.	因建築物後移導致的覆蓋面積	不適用
額外總樓面面積		面積(平方米)
30.	額外總樓面面積	535.589

備註：上述表格是根據屋宇署所發出的《認可人士、註冊結構工程師及註冊岩土工程師作業備考》ADM-2規定的要求而制訂的。屋宇署會按實際需要不時更改有關要求。

29 申請建築物總樓面面積寬免的資料 INFORMATION IN APPLICATION FOR CONCESSION ON GROSS FLOOR AREA OF BUILDING

有關建築物的環境評估

綠色建築認證

在印刷此售樓說明書或其附頁前，本物業根據香港綠色建築議會有限公司頒授 / 發出的綠建環評認證評級。

初步評級註冊

此項目已註冊登記作香港綠色建築議會有限公司認受的綠建環評認證，但尚未完成評估程序。



申請編號: REG0011/22

期數的公用部分的預計能量表現或消耗

於印製售樓說明書前呈交予建築事務監督有關期數的公用部分的預計能量表現或消耗的最近期資料：

第 I 部分						
提供中央空調		否				
提供具能源效益的設施		是				
擬安裝的具能源效益的設施		(1)使用高效能空調機 (2)使用節能照明配件 (3)使用高效能摩打升降機				
第 II 部分：擬興建樓宇/部分樓宇之預計每年能源消耗量 ^(註腳1)						
發展項目類型	位置	使用有關裝置的內部樓面面積 (平方米)	基線樓宇每年能源消耗量 ^(註腳2)		擬興建樓宇每年能源消耗量	
			電力 千瓦小時 / 平方米 / 年	煤氣 / 石油氣 用量單位 / 平方米 / 年	電力 千瓦小時 / 平方米 / 年	煤氣 / 石油氣 用量單位 / 平方米 / 年
住用發展項目 (不包括酒店)	中央屋宇裝備裝置 ^(註腳3)	8,577.40	279.90	54.90	209.60	32.90
非住用發展項目 (包括酒店) ^(註腳4)	平台 (非中央屋宇裝備置)	1,616	52.20	不適用	32.90	不適用

- 註腳： 1. 一般而言，一棟樓宇的預計“每年能源消耗量”愈低，其節約能源的效益愈高。如一棟樓宇預計的“每年能源消耗量”低於該樓宇的“基線樓宇每年能源消耗量”，則代表預計該樓宇的能源應用較其基線樓宇有效，削減幅度愈大則代表有關樓宇能源節約的效益愈高。預計每年能源消耗量〔以耗電量(千瓦小時/平方米/年)及煤氣 / 石油氣消耗量(用量單位/平方米/年)計算〕，指將發展項目的每年能源消耗總量除以使用有關裝置的內部樓面面積所得出的商，其中：-
- (a) “每年能源消耗量”與新建樓宇BEAM Plus 標準(現行版本)第4 節及附錄8 中的「年能源消耗」具有相同涵義；及
- (b) 樓宇、空間或單位的“內部樓面面積”，指外牆及 / 或共用牆的內壁之內表面起量度出來的樓面面積。
2. “基線樓宇”與新建樓宇BEAM Plus 標準(現行版本)第4 節及附錄8 中的“基準建築物模型(零分標準)”具有相同涵義。
3. “中央屋宇裝備裝置”與機電工程署發出的《屋宇裝備裝置能源效益實務守則》中的涵義相同。
4. 平台一般指發展項目的最低部分(通常為發展項目最低15米部分及其地庫(如適用))，並與其上的塔樓具有不同用途。對於並無明確劃分平台與塔樓的發展項目，應視整個發展項目為塔樓。

第 III 部分：以下裝置乃按機電工程署公布的相關實務守則設計

照明裝置	是	升降機及自動梯的裝置	是
空調裝置	是	以總能源為本的方法	不適用
電力裝置	是		

29 申請建築物總樓面面積寬免的資料

INFORMATION IN APPLICATION FOR CONCESSION ON GROSS FLOOR AREA OF BUILDING

Breakdown of GFA Concessions Obtained for All Features

Latest information on breakdown of GFA concessions as shown on the general building plans submitted to and approved by the Building Authority (BA) prior to the printing of the sales brochure is tabulated below. Information marked (#) may be based on information provided by the Authorized Person if the sales brochure is printed prior to submission of the final amendment plans to the BA. The breakdown of GFA concessions may be subject to further changes until final amendment plans are submitted to and approved by the BA prior to the issuance of the occupation permit for the development.

Disregarded GFA under Building (Planning) Regulations 23(3)(b)		Area (m ²)
1.(#)	Carpark and loading / unloading area excluding public transport terminus	Not applicable
2.	Plant rooms and similar services	
2.1(#)	Mandatory feature or essential plant room, area of which is limited by respective Practice Notes for Authorized Persons, Registered Structural Engineers and Registered Geotechnical Engineers (PNAP) or regulation such as lift machine room, telecommunications and broadcasting (TBE) room, refuse storage and material recovery chamber, etc.	153.341
2.2(#)	Mandatory feature or essential plant room, area of which is NOT limited by any PNAP or regulation such as room occupied solely by fire services installations (FSI) and equipment, meter room, transformer room, potable and flushing water tank, etc.	574.813
2.3(#)	Non-mandatory or non-essential plant room such as air-conditioning plant room, air handling unit (AHU) room, etc.	Not applicable
Green Features under Joint Practice Notes 1 and 2		Area (m ²)
3.(#)	Balcony	293.097
4.	Wider common corridor and lift lobby	Not applicable
5.	Communal sky garden	Not applicable
6.	Acoustic fin	Not applicable
7.	Wing wall, wind catcher and funnel	Not applicable
8.(#)	Non-structural prefabricated external wall	Not applicable
9.(#)	Utility platform	168.000
10.	Noise barrier	Not applicable

Amenity Features		Area (m ²)
11.(#)	Counter, office, store, guard room and lavatory for watchman and management staff, Owners' Corporation Office	Not applicable
12.	Residential recreational facilities including void, plant room, swimming pool filtration plant room, covered walkway etc. serving solely the recreational facilities	316.974
13.(#)	Covered landscaped and play area	383.492
14.	Horizontal screens/covered walkways, trellis	Not applicable
15.(#)	Larger lift shaft	83.602
16.	Chimney shaft	Not applicable
17.	Other non-mandatory or non-essential plant room, such as boiler room, satellite master antenna television (SMATV) room.	Not applicable
18.(#)	Pipe duct, air duct for mandatory feature or essential plant room	176.948
19.	Pipe duct, air duct for non-mandatory or non-essential plant room	4.933
20.	Plant room, pipe duct, air duct for environmentally friendly system and feature	Not applicable
21.	Void in duplex domestic flat and house	Not applicable
22.	Projections such as air-conditioning box and platform with a projection of more than 750 mm from the external wall	Not applicable
Other Exempted Items		Area (m ²)
23.(#)	Refuge floor including refuge floor cum sky garden	Not applicable
24.(#)	Other projections	Not applicable
25.	Public transport terminus	Not applicable
26.(#)	Party structure and common staircase	Not applicable
27.(#)	Horizontal area of staircase, lift shaft and vertical duct solely serving floor accepted as not being accountable for GFA.	208.252
28.(#)	Public passage	Not applicable
29.	Covered set back area	Not applicable
Bonus GFA		Area (m ²)
30.	Bonus GFA	535.589

Note: The above table is based on the requirements as stipulated in the Practice Note for Authorized Persons, Registered Structural Engineers and Registered Geotechnical Engineers ADM-2 issued by the Buildings Department. The Buildings Department may revise such requirements from time to time as appropriate.

29 申請建築物總樓面面積寬免的資料

INFORMATION IN APPLICATION FOR CONCESSION ON GROSS FLOOR AREA OF BUILDING

The Environmental Assessment of the Building

Green Building Certification

Assessment result under the **BEAM Plus** certification conferred / issued by Hong Kong Green Building Council Limited (HKGBC) for the building prior to the printing of the sales brochure or its addenda.

Provisional Assessment Status

This project has completed the project registration application acknowledged by the HKGBC, but not yet gone through the whole Assessment process.

Application no.: REG0011/22



Estimated Energy Performance or Consumption for the Common Parts of the Phase

Latest information on the estimated energy performance or consumption for the common parts of the Phase as submitted to the Building Authority prior to the printing of the sales brochure:

Part I						
Provision of Central Air Conditioning			No			
Provision of Energy Efficient Features			Yes			
Energy Efficient Features proposed			(1) High COP air-conditioning units (2) Use of energy saving light fittings (3) Lift system with high motor efficiency			
Part II: The predicted annual energy use of the proposed building / part of building ^(Note 1)						
Type of Development	Location	Internal Floor Area Served (m ²)	Annual Energy Use of Baseline Building ^(Note 2)		Annual Energy Use of Proposed Building	
			<u>Electricity</u> kWh / m ² / annum	<u>Town Gas / LPG</u> unit / m ² / annum	<u>Electricity</u> kWh / m ² / annum	<u>Town Gas / LPG</u> unit / m ² / annum
Domestic Development (excluding Hotel)	Central building services installation ^(Note 3)	8,577.40	279.90	54.90	209.60	32.90
Non-domestic Development (including Hotel) ^(Note 4)	Podium(s) (non-central building services installation)	1,616	52.20	Not applicable	32.90	Not applicable

- Notes: 1. In general, the lower the estimated "Annual Energy Use" of the building, the more efficient the building in terms of energy use. For example, if the estimated "annual energy use of proposed building" is less than the estimated "annual energy use of baseline building", it means the predicted use of energy is more efficient in the proposed building than in the baseline building. The larger the reduction, the greater the efficiency. The predicted annual energy use, in terms of electricity consumption (kWh/m²/annum) and town gas/LPG consumption (unit/m²/annum), of the development by the internal floor area served, where: –
(a) "total annual energy use" has the same meaning of "annual energy use" under Section 4 and Appendix 8 of the BEAM Plus for New Building (current version); and
(b) "internal floor area", in relation to a building, a space or a unit means the floor area of all enclosed space measured to the internal faces of enclosing external and/or party walls.
2. "Baseline Building" has the same meaning as "Baseline Building Model (zero-credit benchmark)" under Section 4 and Appendix 8 of the BEAM Plus for New Building (current version).
3. "Central Building Services Installation" has the same meaning as that in the Code of Practice for Energy Efficiency of Building Services Installation issued by the Electrical and Mechanical Services Department.
4. Podium(s) normally means the lowest part of the development (usually the lowest 15m of the development and its basement, if any) carrying different use(s) from that of the tower(s) above. For development without clear demarcation between podium(s) and tower(s), the development, as a whole, should be considered as tower(s).

Part III : The following installations are designed in accordance with the relevant Codes of Practices published by the Electrical & Mechanical Services Department (EMSD)			
Lighting Installations	Yes	Lift & Escalator Installations	Yes
Air Conditioning Installations	Yes	Performance-based Approach	Not Applicable
Electrical Installations	Yes		

1. 後續期數的施工

後續期數的施工可能對期數內住宅物業之享用，諸如景觀、噪音、沙塵及/或周邊環境方面，造成重大影響。

2. 建築裝飾

期數的部分住宅單位外設有建築裝飾。此等建築裝飾可能對部份單位的景觀造成影響。有關建築裝飾的位置，請參閱本售樓說明書的「期數的住宅物業的樓面平面圖」。

3. 放置室外空調機

部分室外空調機（不論為該住宅單位而設或是為其他住宅單位而設）放置在露台/工作平台上的空調機平台、露台上的空調機平台、私人平台或私人天台。室外空調機的放置可能對期數的住宅單位的享用，諸如熱氣及噪音或其他方面造成影響。有關室外空調機的位置，請參閱「期數的住宅物業的樓面平面圖」。

4. 燈飾

發展項目部分住宅單位及商業部分的外牆及/或建築裝飾裝置外牆裝飾燈，該等燈飾可能不時開啟。

位於發展項目第一期的室外游泳池有安裝照明系統及可能不時開啟。

該等照明可能對期數住宅物業的享用，諸如景觀、光及對周邊環境的其他方面造成影響。

5. 喉管

期數部分住宅單位的平台及/或露台的外牆或毗鄰平台及/或露台及/或工作平台的外牆裝有公用喉管及/或外露喉管。部分住宅單位的景觀可能因此受到影響。

6. 建築物維修系統的操作

根據公契，管理人有權不時為清潔、保養及/或維修外牆、玻璃幕牆及公用地方及設施的目的，於構成住宅單位一部分的私人平台或私人天台的建築周邊安裝及拆除錨及其他裝置以便建築物維修系統的操作，包括但不限於吊船或其他類似裝置。吊船或其他類似裝置可以經過及/或停泊於構成住宅單位一部分的私人平台或私人天台。

7. 避雷針

在發展項目第二座的高層天台2提供及裝置一支避雷針，其高度達香港主水平基準以上約+115.295米及在發展項目第三座的高層天台2提供及裝置一支避雷針，其高度達香港主水平基準以上約+115.395米。避雷針可能對期數住宅物業的享用，諸如景觀或對周邊環境的其他方面造成影響。

8. 綠化範圍

根據副公契，位於期數二樓、三樓、高層天台2及外牆的綠化範圍被指定為並構成第二期公用地方、第二期屋苑住宅公用地方、或第二期商業發展項目一部分。期數的每一擁有人均須分擔管理及維修構成屋苑公用地方（如有）或第二期公用地方一部分的部分綠化範圍的費用，而期數的每一住宅單位的擁有人均須分擔管理及維修構成屋苑住宅公用地方（包括第二期屋苑住宅公用地方）一部分的部分綠化範圍的費用。

9. 附近的其他地段

(a) 第一毗鄰地段

一間賣方的有聯繫公司（「第一毗鄰地段的擁有人」）擁有發展項目附近的其他地段，即紅磡海旁地段第1號A分段第9小分段A段、紅磡海旁地段第1號A分段第9小分段B段、紅磡海旁地段第1號A分段第9小分段C段、紅磡海旁地段第1號A分段第9小分段D段、紅磡海旁地段第1號A分段第9小分段E段、紅磡海旁地段第1號A分段第9小分段F段、紅磡海旁地段第1號A分段第9小分段G段、紅磡海旁地段第1號A分段第9小分段H段、紅磡海旁地段第1號A分段第9小分段I段、紅磡海旁地段第1號A分段第9小分段J段、紅磡海旁地段第1號A分段第9小分段K段、紅磡海旁地段第1號A分段第9小分段L段及紅磡海旁地段第1號A分段第9小分段餘段（統稱為「第一毗鄰地段」），亦即九龍機利士南路2-28號及必嘉街76-78號。第一毗鄰地段並不構成發展項目的一部分。

直至本售樓說明書的印製日期為止，第一毗鄰地段的擁有人正考慮第一毗鄰地段的發展。賣方及第一毗鄰地段的擁有人不會就第一毗鄰地段現在或將來的使用、保養、出售、處置、發展或其他方面作出任何形式的保證或陳述。第一毗鄰地段的擁有人明確保留所有與第一毗鄰地段有關的權利，包括但不限於第一毗鄰地段的使用、保養、出售、處置、發展、任何建築圖則的遞交及修改或其他任何方面。

在獲得政府批准後，將來在第一毗鄰地段上不時進行的工程、使用、處置或發展可能對發展項目住宅單位的享用，諸如通行、景觀、噪音或對周邊環境的其他方面造成影響。

(b) 第二毗鄰地段

另一間賣方的有聯繫公司（「第二毗鄰地段的擁有人」）擁有發展項目附近的其他地段，即期數位處於紅磡海旁地段第1號A分段第10小分段、紅磡海旁地段第1號A分段第12小分段A段、紅磡海旁地段第1號A分段第12小分段B段、紅磡海旁地段第1號A分段第12小分段餘段及紅磡海旁地段第1號A分段第14小分段（統稱為「第二毗鄰地段」），亦即九龍黃埔街1-21C號及必嘉街80-86號。第二毗鄰地段並不構成發展項目的一部分。

直至本售樓說明書的印製日期為止，第二毗鄰地段的擁有人正考慮第二毗鄰地段的發展。賣方及第二毗鄰地段的擁有人不會就第二毗鄰地段現在或將來的使用、保養、出售、處置、發展或其他方面作出任何形式的保證或陳述。第二毗鄰地段的擁有人明確保留所有與第二毗鄰地段有關的權利，包括但不限於第二毗鄰地段的使用、保養、出售、處置、發展、任何建築圖則的遞交及修改或其他任何方面。

在獲得政府批准後，將來在第二毗鄰地段上不時進行的工程、使用、處置或發展可能對發展項目住宅單位的享用，諸如通行、景觀、噪音或對周邊環境的其他方面造成影響。

(c) 第三毗鄰地段

另一間賣方的有聯繫公司（「第三毗鄰地段的擁有人」）擁有發展項目附近的其他地段，即紅磡海旁地段第1號A分段第11小分段、紅磡海旁地段第1號A分段第13小分段A段、紅磡海旁地段第1號A分段第13小分段B段及紅磡海旁地段第1號A分段第13小分段C段小分段（統稱為「第三毗鄰地段」），亦即九龍黃埔街2-16A號。第三毗鄰地段並不構成發展項目的一部分。

直至本售樓說明書的印製日期為止，第三毗鄰地段的擁有人正考慮第三毗鄰地段的發展。賣方及第三毗鄰地段的擁有人不會就第三毗鄰地段現在或將來的使用、保養、出售、處置、發展或其他方面作出任何形式的保證或陳述。第三毗鄰地段的擁有人明確保留所有與第三毗鄰地段有關的權利，包括但不限於第三毗鄰地段的使用、保養、出售、處置、發展、任何建築圖則的遞交及修改或其他任何方面。

在獲得政府批准後，將來在第三毗鄰地段上不時進行的工程、使用、處置或發展可能對發展項目住宅單位的享用，諸如通行、景觀、噪音或對周邊環境的其他方面造成影響。

(d) 第四毗鄰地段

另一間賣方的有聯繫公司（「第四毗鄰地段的擁有人」）擁有發展項目附近的其他地段，即期數位處於紅磡海旁地段第1號A分段第15小分段（稱為「第四毗鄰地段」），亦即九龍黃埔街22 - 24號及必嘉街88-90A號。第四毗鄰地段並不構成發展項目的一部分。

直至本售樓說明書的印製日期為止，第四毗鄰地段的擁有人正考慮第四毗鄰地段的發展。賣方及第四毗鄰地段的擁有人不會就第四毗鄰地段現在或將來的使用、保養、出售、處置、發展或其他方面作出任何形式的保證或陳述。第四毗鄰地段的擁有人明確保留所有與第四毗鄰地段有關的權利，包括但不限於第四毗鄰地段的使用、保養、出售、處置、發展、任何建築圖則的遞交及修改或其他任何方面。

在獲得政府批准後，將來在第四毗鄰地段上不時進行的工程、使用、處置或發展可能對發展項目住宅單位的享用，諸如通行、景觀、噪音或對周邊環境的其他方面造成影響。

(e) 第五毗鄰地段

另一間賣方的有聯繫公司（「第五毗鄰地段的擁有人」）擁有發展項目附近的其他地段，即期數位處於紅磡海旁地段第1號A分段第8小分段、紅磡海旁地段第1號A分段第6小分段餘段、紅磡海旁地段第1號A分段第6小分段B段及紅磡海旁地段第1號A分段第6小分段A段（統稱為「第五毗鄰地段」），亦即九龍黃埔街26-40A號及必嘉街83-85號。第五毗鄰地段並不構成發展項目的一部分。

直至本售樓說明書的印製日期為止，第五毗鄰地段的擁有人正考慮第五毗鄰地段的發展。賣方及第五毗鄰地段的擁有人不會就第五毗鄰地段現在或將來的使用、保養、出售、處置、發展或其他方面作出任何形式的保證或陳述。第五毗鄰地段的擁有人明確保留所有與第五毗鄰地段有關的權利，包括但不限於第五毗鄰地段的使用、保養、出售、處置、發展、任何建築圖則的遞交及修改或其他任何方面。在獲得政府批准後，將來在第五毗鄰地段上不時進行的工程、使用、處置或發展可能對發展項目住宅單位的享用，諸如通行、景觀、噪音或對周邊環境的其他方面造成影響。

10. 商業部分

商業部分現有的設計僅為設計師的初步構思，只供參考。賣方將會向屋宇署遞交一份改動的建築圖則以更改商業部分現有的設計並保留一切權利，按實際情況需要就商業部分作出改動，而無須另行通知，並一切皆以入伙時之實際提供及政府有關部門最後批准之圖則或所需之同意書或許可證為準。

註：除非本售樓說明書另有定義，本有關資料內所採用的詞彙與該詞彙在公契內及副公契內的涵義相同。

1. Construction of Subsequent Phases

The construction works of the subsequent phase may materially affect the enjoyment of the residential properties in the Phase in terms of views, noise, dust and/or other aspects of the surrounding environment.

2. Architectural features

Some architectural features are installed outside some residential units of the Phase. The views of some residential units may be affected by these architectural features. For the locations of the architectural features, please refer to the “Floor Plans of Residential Properties in the Phase” in this sales brochure.

3. Placement of outdoor air-conditioning units

Some outdoor air-conditioning units (either serving its own residential unit or other residential units) are placed on the air-conditioning platforms in balconies/utility platforms, air-conditioning platforms in balconies, private flat roofs or private roofs. The placement of the outdoor air-conditioning units may affect the enjoyment of the residential units of the Phase in terms of heat and noise or other aspects. For the locations of the outdoor air-conditioning units, please refer to “Floor Plans of Residential Properties in the Phase”.

4. Lighting

Facade lighting is installed on the external walls and /or architectural features of some residential units and the Commercial Development of the development and may be turned on from time to time.

Lightings are installed at the outdoor swimming pool located at Phase 1 of the development and may be turned on from time to time.

The illumination of these lighting may affect the enjoyment of some residential units in the Phase in terms of views, lighting and other aspects of the surrounding environment.

5. Pipes

Some common pipes and/or exposed pipes are located on the external walls at or adjacent to the flat roofs and/or balconies and/or utility platforms of some residential units of the Phase. It is possible that the views of some residential units may be affected by these pipes.

6. Operation of building maintenance system

Under the Deed of Mutual Covenant, the Manager shall have the right from time to time for the purposes of cleaning, maintaining and/or repairing the external wall, curtain wall and the Common Areas and Facilities to install and remove anchors and other provisions at the building perimeter of the private flat roof or private roof forming part of a Residential Unit for the operation of the building maintenance system including but not limited to gondola or an equipment of the like which shall be entitled to pass through and/or rest on private flat roof or private roof forming part of a Residential Unit.

7. Lightning Poles

One lightning pole reaching a height of approximately +115.295 m.P.D. is provided and installed at the upper roof 2 of Tower 2 of the development and one lighting pole reaching a height of approximately +115.395 m.P.D. is provided and installed at the upper roof 2 of Tower 3 of the development. The existence of the lightning poles may affect the enjoyment of some residential units in the Phase in terms of the views and other aspects of the surrounding environment.

Note: “m.P.D.” means metre above the Hong Kong Principal Datum.

8. Greenery Areas

Under the Sub-Deed of Mutual Covenant, greenery areas on 2/F, 3/F, upper roof 2, and the external walls of the Phase are designated as and form part of the Phase 2 Common Areas, Estate Residential Common Areas In Phase 2 or the Phase 2 Commercial Development. The owner of each unit of the Phase is obliged to contribute towards the cost of management and maintenance of the portion of such greenery areas which form parts of the Estate Common Areas (if any) or the Phase 2 Common Areas, and the owner of each residential unit in the Phase is obliged to contribute towards the costs of management and maintenance of the portion of such greenery areas which form part of the Estate Residential Common Areas (including the Estate Residential Common Areas In Phase 2).

9. Other Lots Nearby

(a) 1st Adjacent Lots

An associate corporation of the Vendor (the “Owner of the 1st Adjacent Lots”) owns other lots near the development, namely, Section A of Sub-section 9 of Section A of Hung Hom Marine Lot No.1, Section B of Sub-section 9 of Section A of Hung Hom Marine Lot No.1, Section C of Sub-section 9 of Section A of Hung Hom Marine Lot No.1, Section D of Sub-section 9 of Section A of Hung Hom Marine Lot No.1, Section E of Sub-section 9 of Section A of Hung Hom Marine Lot No.1, Section F of Sub-section 9 of Section A of Hung Hom Marine Lot No.1, Section G of Sub-section 9 of Section A of Hung Hom Marine Lot No.1, Section H of Sub-section 9 of Section A of Hung Hom Marine Lot No.1, Section I of Sub-section 9 of Section A of Hung Hom Marine Lot No.1, Section J of Sub-section 9 of Section A of Hung Hom Marine Lot No.1, Section K of Sub-section 9 of Section A of Hung Hom Marine Lot No.1, Section L of Sub-section 9 of Section A of Hung Hom Marine Lot No.1, The Remaining Portion of Sub-section 9 of Section A of Hung Hom Marine Lot No.1 (collectively the “1st Adjacent Lots”) at Nos. 2-28 Gillies Avenue South and Nos. 76-78 Baker Street, Kowloon, which do not form part of the development.

As at the date of printing of this sales brochure, the Owner of the 1st Adjacent Lots is considering development of the 1st Adjacent Lots. The Vendor and the Owner of the 1st Adjacent Lots give no warranties or representations whatsoever, whether in relation to any present or future use, maintenance, sale, disposal, development or otherwise, in respect of the 1st Adjacent Lots. The Owner of the 1st Adjacent Lots expressly reserves all rights in respect of the 1st Adjacent Lots, including but not limited to the use, maintenance, sale, disposal, development, submissions of and any amendments to any building plans or otherwise.

Subject to approval by the Government, any works, use, disposal or development from time to time of the 1st Adjacent Lots in the future may affect the enjoyment of the residential units in the development in terms of the access, views, noise and other aspects of the surrounding environment.

(b) 2nd Adjacent Lots

Another associate corporation of the Vendor (the “Owner of the 2nd Adjacent Lots”) owns other lots near the development, namely, Sub-section 10 of Section A of Hung Hom Marine Lot No.1, Section A of Sub-section 12 of Section A of Hung Hom Marine Lot No.1, Section B of Sub-section 12 of Section A of Hung Hom Marine Lot No.1, The Remaining Portion of Sub-section 12 of Section A of Hung Hom Marine Lot No.1 and Sub-section 14 of Section A of Hung Hom Marine Lot No.1 (collectively the “2nd Adjacent Lots”) at Nos. 1-21C Whampoa Street and Nos. 80-86 Baker Street, Kowloon, which do not form part of the development.

As at the date of printing of this sales brochure, the Owner of the 2nd Adjacent Lots is considering development of the 2nd Adjacent Lots. The Vendor and the Owner of the 2nd Adjacent Lots give no warranties or representations whatsoever, whether in relation to any present or future use, maintenance, sale, disposal, development or otherwise, in respect of the 2nd Adjacent Lots. The Owner of the 2nd Adjacent Lots expressly reserves all rights in respect of the 2nd Adjacent Lots, including but not limited to the use, maintenance, sale, disposal, development, submissions of and any amendments to any building plans or otherwise.

Subject to approval by the Government, any works, use, disposal or development from time to time of the 2nd Adjacent Lots in the future may affect the enjoyment of the residential units in the development in terms of the access, views, noise and other aspects of the surrounding environment.

(c) 3rd Adjacent Lots

Another associate corporation of the Vendor (the “Owner of the 3rd Adjacent Lots”) owns other lots near the development, namely, Sub-section 11 of Section A of Hung Hom Marine Lot No.1, Section A of Sub-section 13 of Section A of Hung Hom Marine Lot No.1, Section B of Sub-section 13 of Section A of Hung Hom Marine Lot No.1 and Section C of Sub-section 13 of Section A of Hung Hom Marine Lot No.1 (collectively the “3rd Adjacent Lots”) at Nos. 2-16A Whampoa Street, Kowloon, which do not form part of the development.

As at the date of printing of this sales brochure, the Owner of the 3rd Adjacent Lots is considering development of the 3rd Adjacent Lots. The Vendor and the Owner of the 3rd Adjacent Lots give no warranties or representations whatsoever, whether in relation to any present or future use, maintenance, sale, disposal, development or otherwise, in respect of the 3rd Adjacent Lots. The Owner of the 3rd Adjacent Lots expressly reserves all rights in respect of the 3rd Adjacent Lots, including but not limited to the use, maintenance, sale, disposal, development, submissions of and any amendments to any building plans or otherwise.

Subject to approval by the Government, any works, use, disposal or development from time to time of the 3rd Adjacent Lots in the future may affect the enjoyment of the residential units in the development in terms of the access, views, noise and other aspects of the surrounding environment.

(d) 4th Adjacent Lot

Another associate corporation of the Vendor (the “Owner of the 4th Adjacent Lot”) owns another lot near the development, namely, Sub-section 15 of Section A of Hung Hom Marine Lot No.1 (the “4th Adjacent Lot”) at Nos.22-24 Whampoa Street and Nos. 88-90A Baker Street, Kowloon, which does not form part of the development.

As at the date of printing of this sales brochure, the Owner of the 4th Adjacent Lot is considering development of the 4th Adjacent Lot. The Vendor and the Owner of the 4th Adjacent Lot give no warranties or representations whatsoever, whether in relation to any present or future use, maintenance, sale, disposal, development or otherwise, in respect of the 4th Adjacent Lot. The Owner of the 4th Adjacent Lot expressly reserves all rights in respect of the 4th Adjacent Lot, including but not limited to the use, maintenance, sale, disposal, development, submissions of and any amendments to any building plans or otherwise.

Subject to approval by the Government, any works, use, disposal or development from time to time of the 4th Adjacent Lot in the future may affect the enjoyment of the residential units in the development in terms of the access, views, noise and other aspects of the surrounding environment.

(e) 5th Adjacent Lots

Another associate corporation of the Vendor (the “Owner of the 5th Adjacent Lots”) owns other lots near the development, namely, Sub-section 8 of Section A of Hung Hom Marine Lot No.1, The Remaining Portion of Sub-section 6 of Section A of Hung Hom Marine Lot No.1, Section B of Sub-section 6 of Section A of Hung Hom Marine Lot No.1 and Section A of Sub-section 6 of Section A of Hung Hom Marine Lot No.1 (collectively the “5th Adjacent Lots”) at Nos. 26-40A Whampoa Street and Nos. 83-85 Baker Street, Kowloon, which do not form part of the development.

As at the date of printing of this sales brochure, the Owner of the 5th Adjacent Lots is considering development of the 5th Adjacent Lots. The Vendor and the Owner of the 5th Adjacent Lots give no warranties or representations whatsoever, whether in relation to any present or future use, maintenance, sale, disposal, development or otherwise, in respect of the 5th Adjacent Lots. The Owner of the 5th Adjacent Lots expressly reserves all rights in respect of the 5th Adjacent Lots, including but not limited to the use, maintenance, sale, disposal, development, submissions of and any amendments to any building plans or otherwise.

Subject to approval by the Government, any works, use, disposal or development from time to time of the 5th Adjacent Lots in the future may affect the enjoyment of the residential units in the development in terms of the access, views, noise and other aspects of the surrounding environment.

10. Commercial Development

The current design concept of the Commercial Development of the development is the preliminary idea generated by the designer and is for reference only. The vendor intends to submit a revised general building plans to the Buildings Department to revise the design of the Commercial Development and reserves the right to make modifications and changes to the Commercial Development according to actual circumstances without prior notice. All should be subject to the actual provisions upon completion and the final plans approved by relevant Government authorities or the consent letter(s) or permit(s) that are required.

Remarks: Unless otherwise defined in this sales brochure, the capitalized terms used in this Relevant Information shall have the same meaning of such terms in the Deed of Mutual Covenant and the Sub-Deed of Mutual Covenant.



賣方就期數指定的互聯網網站的網址：
The address of the website designated by the vendor for the Phase：
www.bakercircle.com.hk

期數及其周邊地區日後可能出現改變。
There may be future changes to the Phase and the surrounding areas.

本售樓說明書印製日期：2022年9月19日。Date of printing of this Sales Brochure：19th September 2022

檢視 / 修改日期 Examination / Revision Date	所作修改 Revision Made	
	頁次 Page Number	所作修改 Revision Made
2022年11月2日 2nd November 2022	15	更新發展項目的所在位置圖。 Update the location plan of the Development.
	22	更新關乎發展項目的分區計劃大綱圖等。 Update the outline zoning plan etc. relating to the Development.
	24	修訂發展項目的布局圖。 Revise the layout plan of the Development.
	26, 28, 30, 32, 34, 36	修訂期數的住宅物業的樓面平面圖。 Revise the floor plans of residential properties in the Phase.
	53, 60	修訂公契的摘要。 Revise the summary of deed of mutual covenant.
	68, 69	修訂立面圖。 Revise the elevation plan.
	72-74, 77-80, 86-87	修訂裝置、裝修物料及設備。 Revise the fittings, finishes and appliances.
	112, 114	修訂申請建築物總樓面面積寬免的資料。 Revise the information in application for concession on gross floor area of building.

此版乃特意留白

This page is deliberately left in blank

此版乃特意留白
This page is deliberately left in blank

此版乃特意留白

This page is deliberately left in blank

此版乃特意留白
This page is deliberately left in blank



此版乃特意留白

This page is deliberately left in blank

此版乃特意留白

This page is deliberately left in blank

此版乃特意留白

This page is deliberately left in blank

